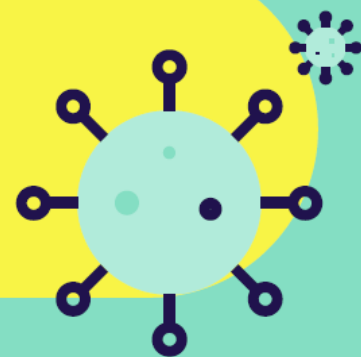


預防2019冠狀病毒病

在進口層面消毒凍房工作環境及食品包裝的指引

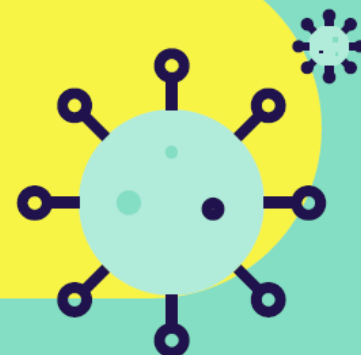


www.cfs.gov.hk/covid19



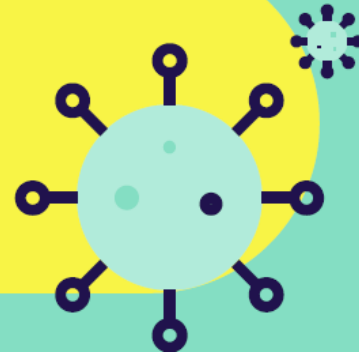
Prevention of COVID-19

Guidance on Disinfecting the Working Environment and the Food Package of Cold Stores at Import Level

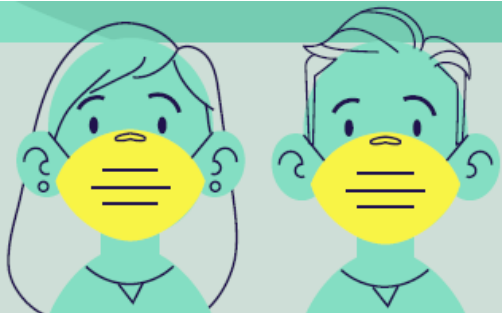


Prevention of COVID-19

Guidance on Disinfecting the Working Environment and
the Food Package of Cold Stores at Import Level



- 消毒劑 Disinfectants
- 消毒方法 Use of Disinfectants
- 使用含氯的消毒劑注意事項 Precautions for the Use of Chlorine-based Disinfectant
- 個人防護 Personal Protection

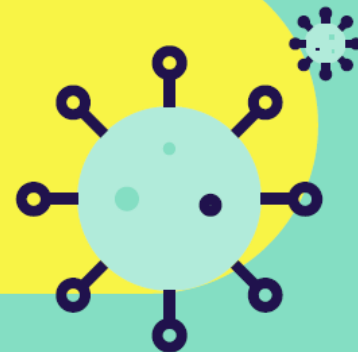


www.cfs.gov.hk/covid19



預防2019冠狀病毒病

在進口層面消毒凍房工作環境及食品包裝的指引



消毒劑 Disinfectants

◆含氯的消毒劑（次氯酸鈉）Chlorine-based disinfectants (sodium hypochlorite)：

✓ 家用漂白劑含5.25% 次氯酸鈉 Household bleach containing 5.25% sodium hypochlorite

✓ **1:99**

➤ 凍房的食物包裝、工作環境和設備

Food package, working environment and equipment of cold stores

✓ **1:49**

➤ 工作環境和相關設備：被嚴重污染或有確診2019冠狀病毒病個案

The environment and equipment: Heavily contaminated or Confirmed case of COVID-19

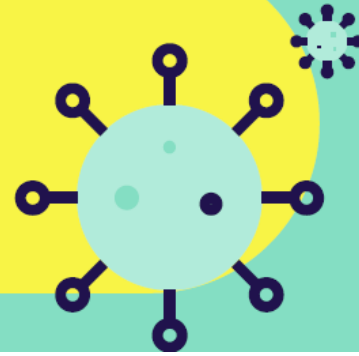


www.cfs.gov.hk/covid19



Prevention of COVID-19

Guidance on Disinfecting the Working Environment and the Food Package of Cold Stores at Import Level



消毒劑 Disinfectants

◆ 其他的消毒劑 Other disinfectants :

- ✓ 70-80%濃度的含酒精消毒劑 Alcohol-based disinfectants (70-80% concentration)
- ✓ 季銨鹽化合物 Quaternary ammonium compounds (QUATS)
- ✓ 可用作消毒食物接觸面、容器、食物盤等
decontaminate food contact surfaces, containers and food trays, etc.



www.cfs.gov.hk/covid19



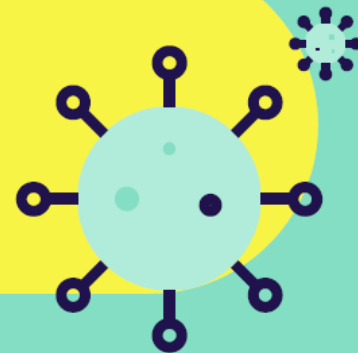
食物環境衛生署
Food and Environmental
Hygiene Department



食物安全中心
Centre for Food Safety

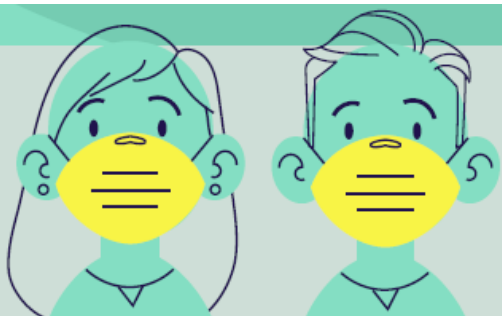
預防2019冠狀病毒病

在進口層面消毒凍房工作環境及食品包裝的指引



消毒方法 Use of Disinfectants

- ◆ 貨物外包裝，在運入倉庫或裝載送貨前，應使用**1比99稀釋的家用漂白劑**作為消毒
1:99 diluted household bleach should be used for disinfection of outer package before bringing into warehouse or loading for delivery
- ◆ 以拭抹或噴灑方式進行 By wiping or spraying
- ◆ 在空氣流通的地方進行 To conduct under well ventilated areas
- ◆ 以免食品受消毒劑污染 To prevent the contamination by disinfectants
- ◆ 食物包裝與消毒 Food Package vs Disinfection



www.cfs.gov.hk/covid19



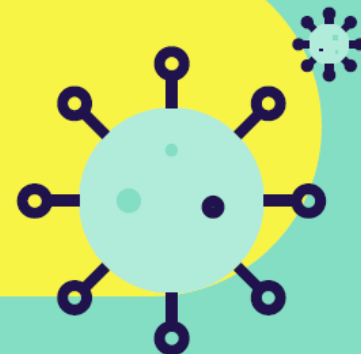
食物環境衛生署
Food and Environmental
Hygiene Department



食物安全中心
Centre for Food Safety

Prevention of COVID-19

Guidance on Disinfecting the Working Environment and the Food Package of Cold Stores at Import Level



消毒方法 Use of Disinfectants

◆ 1比99稀釋的家用漂白劑來清潔和消毒工作環境和設備

1:99 diluted household bleach to cleanse & disinfect the working environment & equipment

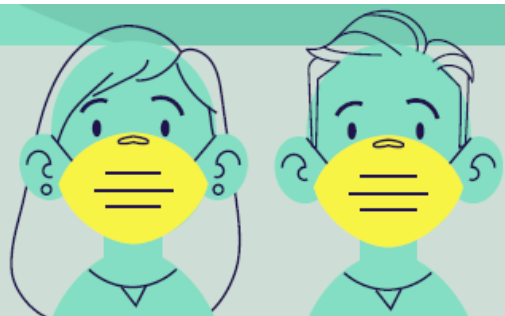
✓ 冷凍食品貯存運輸區域的設施和設備

Facilities and equipment of cold food storage and loading areas

✓ 運輸車輛和運輸設備 Transportation vehicles and equipment

✓ 冷凍設備 Cooling equipment

✓ 頻密接觸點 High touch points



www.cfs.gov.hk/covid19



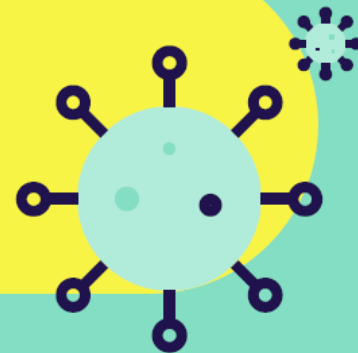
食物環境衛生署
Food and Environmental
Hygiene Department



食物安全中心
Centre for Food Safety

預防2019冠狀病毒病

在進口層面消毒凍房工作環境及食品包裝的指引



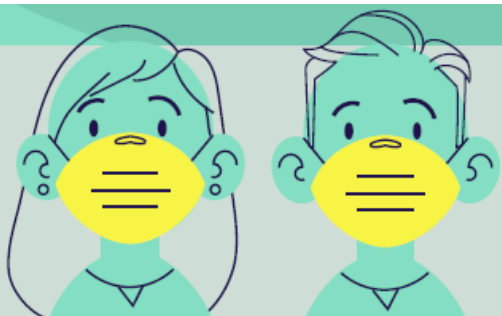
消毒方法 Use of Disinfectants

- ◆ **1比49稀釋的家用漂白劑**消毒被嚴重污染或者是有確診2019冠狀病毒病個案的工作環境和相關設備

1:49 diluted household bleach for disinfection the environment and equipment which are heavily contaminated or when a confirmed case of COVID-19 is encountered

- ◆ 應遵循製造商的指示進行有效消毒處理

Follow the instruction of manufacturers for effective sanitation



www.cfs.gov.hk/covid19



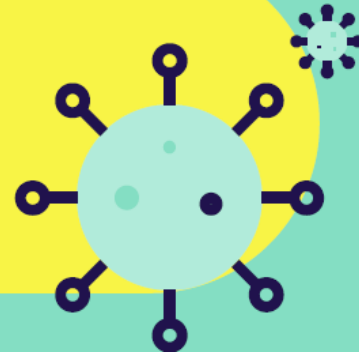
食物環境衛生署
Food and Environmental
Hygiene Department



食物安全中心
Centre for Food Safety

Prevention of COVID-19

Guidance on Disinfecting the Working Environment and the Food Package of Cold Stores at Import Level



使用含氯的消毒劑注意事項

Precautions for the Use of Chlorine-based Disinfectant

- ◆ 在空氣流通的地方稀釋 Dilute in a well-ventilated area
- ◆ 用冷水稀釋 Mix bleach with cold water
- ◆ 避免用於金屬、羊毛、尼龍、絲綢、染色布料及油漆表面
Avoid using on metals, wool, nylon, silk, dyed fabric and painted surfaces
- ◆ 不要與其他家用清潔劑混合使用 Do not mix together with other household detergents



www.cfs.gov.hk/covid19



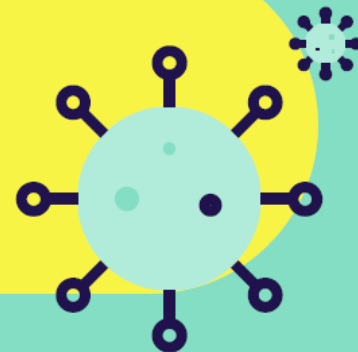
食物環境衛生署
Food and Environmental
Hygiene Department



食物安全中心
Centre for Food Safety

預防2019冠狀病毒病

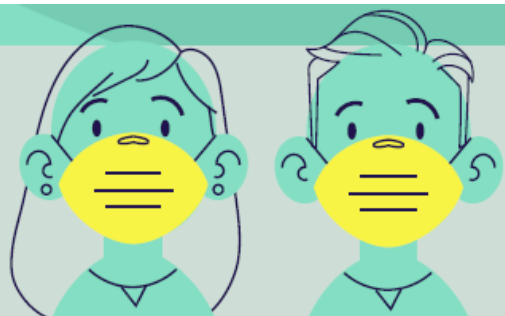
在進口層面消毒凍房工作環境及食品包裝的指引



使用含氯的消毒劑注意事項

Precautions for the Use of Chlorine-based Disinfectant

- ◆ 應儲存於陰涼及有遮蔽的地方 Store in a cool and shaded place
- ◆ 為確保其消毒效能，應購買近期製造的漂白水 and 避免過量儲存
To ensure its effectiveness, purchase recently produced bleach & avoid over-stocking
- ◆ 經稀釋的漂白水應在24 小時內使用 Use diluted bleach within 24 hours

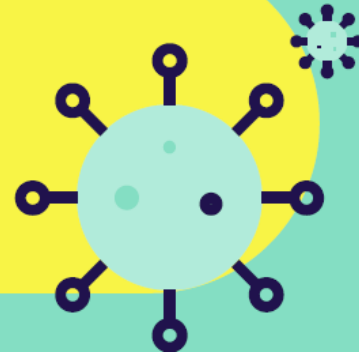


www.cfs.gov.hk/covid19



Prevention of COVID-19

Guidance on Disinfecting the Working Environment and the Food Package of Cold Stores at Import Level



個人防護 Personal Protection

- ◆ 須佩戴適當個人防護裝備 Put on appropriate Personal Protective Equipment
- ◆ 完成消毒程序後，必須徹底洗手 Wash hands thoroughly after the disinfecting procedure
- ◆ 如漂白水濺入眼睛，須立即以清水沖洗最少15分鐘和向醫生求診
If bleach gets into the eyes, immediately rinse with water for at least 15 minutes and consult a doctor



www.cfs.gov.hk/covid19



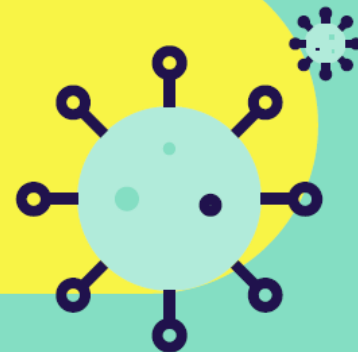
食物環境衛生署
Food and Environmental
Hygiene Department



食物安全中心
Centre for Food Safety

預防2019冠狀病毒病

在進口層面消毒凍房工作環境及食品包裝的指引



有關 2019 冠狀病毒病的最新資訊，可瀏覽
For more information on COVID-19, please visit

www.coronavirus.gov.hk



www.cfs.gov.hk/covid19





食安中心與您

同心抗疫

預防2019冠狀病毒病

