

Draft Guidelines for Technical Meeting with Trade on 27 June 2013.
Subject to further revision.

**Draft Guidelines on Food Classification for the
Pesticide Residues in Food Regulation (Cap. 132CM)**

DRAFT

**Centre for Food Safety
Food and Environmental Hygiene Department
June 2013**

TABLE OF CONTENT

| | Page No. |
|---|---------------------|
| PREFACE | 1 |
| GUIDES IN USING THE CLASSIFICATION TABLES | 3 |
| FOOD CLASSIFICATION TABLES | 8 |
| 01 FRUITS | 8 |
| <i>I. Classification</i> | |
| Citrus fruits | 8 |
| Pome fruits | 11 |
| Stone fruits | 12 |
| Berries and other small fruits | 14 |
| Assorted tropical and sub-tropical fruits – edible peel | 17 |
| Assorted tropical and sub-tropical fruits – inedible peel | 19 |
| <i>II. Special notes to reader on food type “01 FRUITS”</i> | 23 |
| 02 VEGETABLES | 24 |
| <i>I. Classification</i> | |
| Bulb vegetables | 24 |
| Brassica (cole or cabbage) vegetables, Head cabbages, Flowerhead brassicas | 26 |
| Fruiting vegetables, Cucurbits | 28 |
| Fruiting vegetables, other than Cucurbits | 30 |
| Leafy vegetables (including Brassica leafy vegetables) | 32 |
| Legume vegetables | 36 |
| Pulses | 39 |
| Root and tuber vegetables | 41 |
| Stalk and stem vegetables | 43 |
| <i>II. Special notes to reader on food type “02 VEGETABLES”</i> | 45 |

| | Page No. |
|---|---------------------|
| 03 GRASSES | 46 |
| <i>I. Classification</i> | |
| Cereal grains | 46 |
| Grasses, for sugar or syrup production | 48 |
| 04 NUTS AND SEEDS | 49 |
| <i>I. Classification</i> | |
| Tree nuts | 49 |
| Oilseed | 51 |
| Seed for beverages and sweets | 53 |
| <i>II. Special notes to reader on food type “04 NUTS AND SEEDS”</i> | 54 |
| 05 HERBS AND SPICES | 55 |
| <i>I. Classification</i> | |
| Herbs | 55 |
| Spices | 58 |

PREFACE

1.1 To better protect public health, facilitate effective regulatory control and promote harmonisation between local and international standards, the Administration has made a new Pesticide Residues in Food Regulation (“the Regulation”, Cap. 132CM) under the Public Health and Municipal Services Ordinance (Cap. 132) to regulate pesticide residues in food. The Regulation will come into operation on 1 August 2014 after a grace period of two years.

1.2 One of the key features of the Regulation is to adopt the standards of the pesticide residues in food formulated by the Codex Alimentarius Commission (Codex)¹ as the backbone of the local set of standards specified in Schedule 1 of the Regulation. The Codex food classification system is also adopted in parallel. This approach has the benefit of using nomenclatures consistent with those used in international trade.

1.3 This document “Guidelines on Food Classification for the Pesticide Residues in Food Regulation” (the Guidelines) is intended to facilitate the trade in identifying the appropriate pesticide residue limits that are relevant to the food commodities concerned. The Guidelines is prepared by making reference to the Codex Classification of Foods and Animal Feeds (CAC/MISC 4). Only food commodities of local interest/relevance are included in the Guidelines and traders are recommended to refer to the original Codex classification for a complete Codex list of food commodities if necessary. The Guidelines has also incorporated food items of special local interest not found on the Codex list.

1.4 The Guidelines is provided for information only. It does not have the force of law and should not be interpreted in any manner which would override the provision of the Ordinance. In case of any inconsistency, the statutory provisions will prevail. Furthermore, the Guidelines should not be regarded as legal advice. If you need legal advice, you must contact your own lawyer.

1.5 The Guidelines is subject to periodic review by the Director of Food

¹ The Codex Alimentarius Commission was established by the World Health Organization and the Food and Agriculture Organization of the United Nations in 1960s and has been the single most important international reference point for consumers, food producers, processors, national food control agencies and the international food trade in developing food associated standards.

**Draft Guidelines for Technical Meeting with Trade on 27 June 2013.
Subject to further revision.**

and Environmental Hygiene and may be amended or supplemented as necessary from time to time.

DRAFT

GUIDE IN USING THE FOOD CLASSIFICATION TABLES

2.1 The Codex Classification of Food is intended primarily to ensure the use of uniform nomenclature and secondarily to classify foods into groups and/or sub-groups for the purpose of establishing group Maximum Residue Limits (MRLs) for commodities with similar characteristics and residue potential. The Guidelines is mainly focused on the classification of primary food commodities of plant origin. Users may refer to the “User Guidelines for the Pesticide Residues in Food Regulation (Cap. 132CM)” for the interpretation of MRLs/Extraneous Maximum Residue Limits (EMRLs) for processed food and compounded food.

2.2 The Guidelines aims to facilitate the trade in finding the appropriate pesticide residues limits for specific food commodities as stipulated in Schedule 1 of the Regulation, including those for individual commodity concerned, or its relevant subgroup or group MRLs/EMRLs. The Guidelines lists the five common and more complex food classification tables, on “fruits”, “vegetables”, “grasses”, “nuts and seeds” and “herbs and spices”, for readers’ reference. Two examples are provided below to illustrate how to use these classification tables.

Example 1: Blood Orange

(i) Look up the food item concerned (i.e., blood orange), its food group/subgroup and its Codex code (if available) in the classification table

| Code no. | Common name | Scientific name |
|--|----------------------------------|---|
| FC 0001 | Citrus fruits | (includes all commodities in this group) |
| Subgroup C Oranges, Sweet, Sour | | |
| - | Blood orange (see Orange, Sweet) | Cultivar of <i>Citrus sinensis</i> Osbeck |

Blood orange belongs to the food group “Citrus fruits” and the subgroup “Oranges, Sweet, Sour”, with no Codex code.

(ii) Check if there is any further information provided for the food item concerned in the classification table

“See Orange, Sweet” in bracket is found following the common name of blood orange. This means that blood orange is also a kind of sweet orange.

(iii) Find the appropriate pesticide residue limits for the food item concerned

Step 1: Search for MRL/EMRL specified for the food item concerned, i.e., blood orange

- If available, finished.
- If not available, go to Step 1a.

Step 1a: Search for MRL/EMRL specified for the related food item (if available), i.e., “orange, sweet”

- If available, finished.
- If not available, go to Step 2.

Step 2: Search for MRL/EMRL specified for the relevant food subgroup (if available), i.e., “Orange, Sweet, Sour”

- If available, finished.
- If not available, go to Step 3.

Step 3: Search for MRL/EMRL specified for the relevant food group, i.e., “Citrus fruits”

- If available, finished.
- If not available, it means no MRL/EMRL has been specified for this food item, blood orange; go to Step 4.

Step 4: Conduct risk assessment (see para. 2.3 below).

(iv) Look up information on the specific portion of the food item to which the MRL/EMRL applies (i.e., the portion which will be subject to chemical analysis for pesticide residues)

Group 1: Citrus fruits (group letter code FC)

a. Portion of the commodity to which the MRL applies (and which is analysed):

Whole commodity.

The MRL/EMRL will be applicable to the whole blood orange, and the whole blood orange (including peel) will be analysed for the pesticide residues concerned.

Example 2: French bean

(i) Look up the food item concerned (i.e., French bean), its food group/subgroup and its Codex code (if available) in the classification table

| Code no. | Common name | Scientific name |
|---|--|--|
| VP 0060 | Legume vegetables | (includes all commodities in this group) |
| Subgroup A Beans, except broad bean and soya bean (young pods and succulent seeds) | | |
| VP 4415 | French bean (young pods and succulent seeds) (see Common bean) | |

French bean belongs to the food group “Legume vegetables” and the subgroup “Beans, except broad bean and soya bean (young pods and succulent seeds)”, with a Codex code VP 4415.

(ii) Check if there is any further information provided for the food item concerned in the classification table

“See Common bean” in bracket is found following the common name of French bean. This means that French bean is also a kind of common bean.

(iii) Find the appropriate pesticide residue limits for the food item concerned

Step 1: Search for MRL/EMRL specified for the food item concerned, i.e., French bean

- If available, finished.
- If not available, go to Step 1a.

Step 1a: Search for MRL/EMRL specified for the related food item (if available), i.e., Common bean

- If available, finished.
- If not available, go to Step 2.

Step 2: Search for MRL/EMRL specified for the relevant food subgroup (if available), i.e., “Beans, except broad bean and soya bean (young pods and succulent seeds)”

- If available, finished.
- If not available, go to Step 3.

Step 3: Search for MRL/EMRL specified for the relevant food group, i.e., legume vegetables

- If available, finished.
- If not available, it means no MRL/EMRL has been specified for this food item, French bean; go to Step 4.

Step 4: Conduct risk assessment (see para. 2.3 below).

(iv) Look up information on the specific portion of the food item to which the MRL/EMRL applies (i.e., the portion which will be subject to chemical analysis for pesticide residues)

Group 14 – Legume vegetables (group letter code VP)

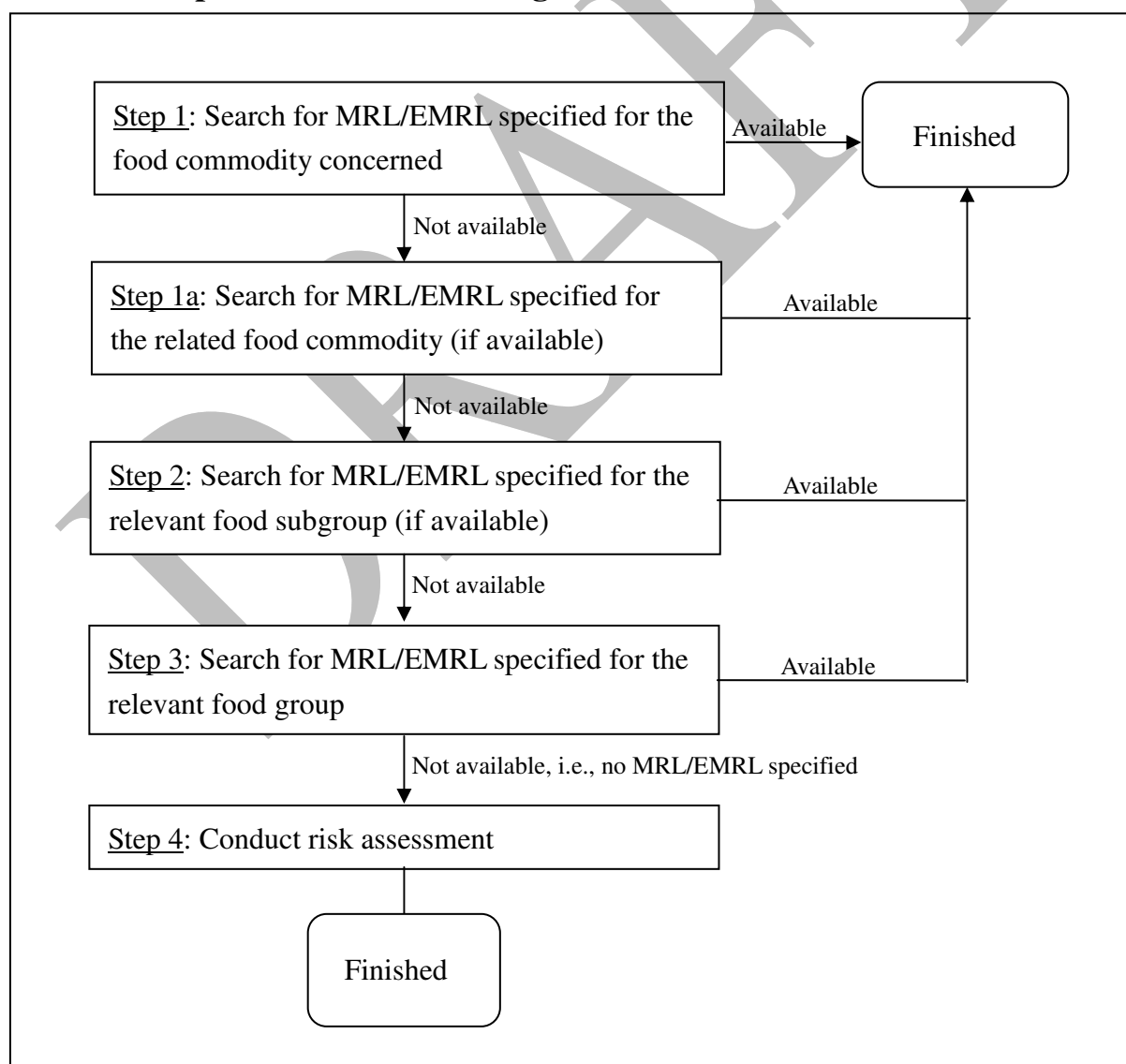
- a. Portion of the commodity to which the MRL applies (and which is analysed): **Whole commodity, unless otherwise specified.**

The MRL/EMRL will be applicable to the whole French bean which will be analysed for the pesticide residues concerned.

2.3 As stipulated in Section 4 of the Regulation, except for exempted pesticides, import and sale of food containing pesticide residues with no MRLs/EMRLs specified in Schedule 1 is only allowed if consumption of the food concerned is not dangerous or prejudicial to health. In deciding whether the consumption of the food concerned is dangerous or prejudicial to health, the Director of Food and Environmental Hygiene (DFEH) will conduct risk assessment.

2.4 Figure 1 summarises the process for finding the appropriate pesticide residue limits for a specific food item using the food classification tables.

Figure 1. A summary diagram of finding the appropriate pesticide residue limits for a specified food item using the food classification tables



FOOD CLASSIFICATION TABLES

01 FRUITS

I. Classification

Group 1 – Citrus fruits (group letter code FC)

- a. Portion of the commodity to which the MRL applies (and which is analysed): **Whole commodity.**
- b. The following four subgroups have been identified:
- Subgroup A “Lemons and Limes” – Hybrids and related species similar to lemons and limes
 - Subgroup B Mandarins – Hybrids and related species similar to mandarins
 - Subgroup C “Oranges, Sweet, Sour” – Hybrids and related species similar to oranges
 - Subgroup D Pummelos – Hybrids and related species
- c. Detailed classification:

| Code no. | Common name | Scientific name |
|------------------------------------|---|---|
| FC 0001 | Citrus fruits | (includes all commodities in this group) |
| Subgroup A Lemons and Limes | | |
| FC 0002 | Lemons and Limes (including Citron) | <ul style="list-style-type: none"> • <i>Citrus limon</i> Burm. f.; • <i>Citrus aurantiifolia</i> Swingle; • <i>Citrus medica</i> L.; Hybrids and related species similar to lemons and limes including <i>Citrus jambhiri</i> Lush; <i>Citrus limetta</i> Risso; <i>Citrus limettoides</i> Tan.; <i>Citrus limonia</i> Osbeck. Syn: see specific fruit species (includes all commodities in this subgroup) |

Draft Guidelines for Technical Meeting with Trade on 27 June 2013.
Subject to further revision.

| Code no. | Common name | Scientific name |
|-----------------------------|---|---|
| FC 0202 | Citron | <i>Citrus medica</i> L.; Syn: <i>Citrus cedra</i> Link; <i>Citrus cedratus</i> Raf.; <i>Citrus medica genuina</i> Engl.; <i>Citrus medica</i> proper Bonavia |
| FC 2206 | Kaffir lime | <i>Citrus hystrix</i> DC. |
| FC 0303 | Kumquats | <i>Fortunella japonica</i> (Thunberg) Swingle; <i>Fortunella margarita</i> (Loureiro) Swingle |
| FC 0204 | Lemon | <i>Citrus limon</i> Burm. f.; Syn: <i>Citrus medica limon</i> L.; <i>Citrus limonum</i> Risso; <i>Citrus medica limonum</i> Hook. F.; <i>Citrus jambhiri</i> Lush. |
| FC 0205 | Lime | <i>Citrus aurantifolia</i> Swingle; Syn: <i>Limonia aurantifolia</i> Christm.; <i>Limonia acidissima</i> Houtt.; <i>Citrus lima</i> Lunan.; <i>Citrus acida</i> Roxb.; <i>Citrus limonellus</i> Hassk. |
| FC 2212 | Yuzu | <i>Citrus junos</i> Siebold ex Tanaka |
| Subgroup B Mandarins | | |
| FC 0003 | Mandarins (including Mandarin-like hybrids) | <i>Citrus reticulata</i> Blanco; Hybrids and related species including <i>Citrus nobilis</i> Lour.; <i>Citrus deliciosa</i> Ten.; <i>Citrus tangarina</i> Hort.; <i>Citrus mitis</i> Blanco Syn: <i>Citrus madurensis</i> Lour.; <i>Citrus unshiu</i> Marcow; Syn: see specific fruit species Mandarin (includes all commodities in this subgroup) |
| - | Clementine | <i>Citrus clementina</i> Hort. ex Tanaka cultivar of <i>Citrus reticulata</i> Blanco (possibly natural hybrid of Mandarin x Orange, Sweet) |
| - | King mandarin | <i>Citrus nobilis</i> Lour. (= hybrid of Mandarin x Orange, Sweet) |
| FC 0206 | Mandarin | <i>Citrus reticulata</i> Blanco; Syn: <i>Citrus nobilis</i> Andrews (non Lour.); <i>Citrus poonensis</i> Hort. ex Tanaka; <i>Citrus chrysocarpa</i> Lush. |
| - | Tangelo, small and medium sized cultivars (see Mandarins) | Hybrids of Mandarin x Grapefruit or Mandarin x Shaddock |
| - | Tangerine | <i>Citrus reticulata</i> Blanco; Syn: <i>Citrus tangarina</i> Hort. ex Tan., <i>Citrus ponnensis</i> Hort., <i>Citrus chrysocarpa</i> Lush., <i>Citrus reshni</i> Hort. |
| - | Tangors | <i>Citrus nobilis</i> Lour. (= Hybrid of Mandarin x Orange, sweet) |
| - | Tankan mandarin (see Mandarins) | <i>Citrus reticulata</i> Blanco <i>tankan</i> Hyata (= probably hybrid of Mandarin x Orange, Sweet) |
| FC 2212 | Unshu orange | <i>Citrus reticulata</i> Blanco ssp. <i>unshiu</i> (Marcow.) D.Rivera Núñez et al. |

**Draft Guidelines for Technical Meeting with Trade on 27 June 2013.
Subject to further revision.**

| Code no. | Common name | Scientific name |
|--|---|---|
| Subgroup C Oranges, Sweet, Sour | | |
| FC 0004 | Oranges, Sweet, Sour (including Orange-like hybrids) | Several cultivars: <i>Citrus sinensis</i> (L.) Osbeck; <i>Citrus aurantium</i> L.; Hybrids and related species: <i>Citrus myrtifolia</i> Raf.; <i>Citrus salicifolia</i> Raf.; Syn: see specific fruit species (includes all commodities in this subgroup) |
| FC 0207 | Orange, Sour | <i>Citrus aurantium</i> L.; Syn: <i>Citrus vulgaris</i> Risso; <i>Citrus bigarradia</i> Loisel ; <i>Citrus communis</i> Le Maout & Dec. |
| FC 0208 | Orange, Sweet | <i>Citrus sinensis</i> (L.) Osbeck; Syn: <i>Citrus aurantium sinensis</i> L.; <i>Citrus dulcis</i> Pers.; <i>Citrus aurantium vulgare</i> Risso & Poit.; <i>Citrus aurantium dulce</i> Hayne |
| - | Blood orange (see Orange, Sweet) | Cultivar of <i>Citrus sinensis</i> (L.) Osbeck |
| Subgroup D Pummelos | | |
| FC 0005 | Pummelo and Grapefruits (including Shaddock-like hybrids, among others Grapefruit) | <i>Citrus maxima</i> (Burm.) Merr.; Syn: <i>Citrus grandis</i> L. Osbeck; <i>Citrus x paradisi</i> Macfad.; <i>Citrus decumana</i> L. Hybrids and related species, similar to Shaddocks, including <i>Citrus natsudaikai</i> Hayata; Tangelos large sized (= hybrid, Grapefruit x Mandarin); Tangelolos: (hybrid, Grapefruit x Tangelo) Syn: see specific fruit species (includes all commodities in this subgroup) |
| FC 0203 | Grapefruit | Hybrid of Shaddock x Orange, Sweet <i>Citrus x paradisi</i> Macfad.; Syn: <i>Citrus maxima uvacarpa</i> Merr. & Lee. |
| FC 0209 | Pummelo | <i>Citrus maxima</i> (Burm.) Merr. Syn: <i>Citrus grandis</i> Osbeck; <i>Citrus aurantium decumana</i> L.; <i>Citrus decumana</i> Murr. |

Group 2 – Pome fruits (group letter code FP)

- a. Portion of the commodity to which the MRL applies (and which is analysed): **Whole commodity after removal of stems.**
- b. No subgroup has been identified under this food group.
- c. Detailed classification:

| Commodity | | |
|------------------|--|---|
| Code no. | Common name | Scientific name |
| FP 0009 | Pome fruits | (includes all commodities in this group) |
| FP 0226 | Apple | <i>Malus domestica</i> Borkhausen |
| FP 0227 | Crab-apple | <i>Malus</i> spp.; among other <i>Malus baccata</i> (L.) Borkh. var. <i>baccata</i> ; <i>Malus prunifolia</i> (Willd.) Borkh. |
| FP 0228 | Loquat | <i>Eriobotrya japonica</i> (Thunberg ex J.A. Murray.) Lindley |
| FP 2222 | Mayhaw | <i>Crataegus</i> spp. |
| FP 0230 | Pear | <i>Pyrus communis</i> L.; <i>Pyrus pyrifolia</i> (Burm.) Nakai; <i>Pyrus bretschneideri</i> Rhd.; <i>Pyrus sinensis</i> L. |
| - | Pear, Oriental (see Pear) | <i>Pyrus pyrifolia</i> (Burm.) Nakai |
| - | Nashi pear (see Pear, Oriental) | |
| - | Sand pear (see Pear, Oriental) | |
| FP 0307 | Persimmon, Japanese (including Persimmon, Chinese) | <i>Diospyros kaki</i> Thunb.; Syn: <i>Diospyros chinensis</i> Blume |
| FP 0231 | Quince | <i>Cydonia oblonga</i> P. Miller; Syn: <i>Cydonia vulgaris</i> Persoon |

Group 3 – Stone fruits (group letter code FS)

- a. Portion of the commodity to which the MRL applies (and which is analysed): **Whole commodity after removal of stems and stones, but the residue is calculated and expressed on the whole commodity without stem.**
- b. The following three subgroups have been identified:
- Subgroup A Cherries – Cherry and related species of *Prunus*, which produce stone fruits similar to cherry
 - Subgroup B Plums – Plum and related species of *Prunus*, which produce stone fruits similar to plum
 - Subgroup C Peaches – Peach, nectarine, apricot and related species of *Prunus*, which produce stone fruits similar to peach, nectarine and apricot.

c. Detailed classification:

| Commodity | | |
|----------------------------|-----------------------------------|--|
| Code no. | Common name | Scientific name |
| FS 0012 | Stone fruits | <i>Prunus</i> spp. (includes all commodities in this group) |
| Subgroup A Cherries | | |
| FS 0013 | Cherries | (includes all commodities in this subgroup) |
| FS 2230 | Cherry, black (including capulin) | <i>Prunus serotina</i> Ehrh. subsp. <i>serotina</i> ; <i>Prunus serotina</i> Ehrh. subsp. <i>capuli</i> |
| FS 0243 | Cherry, Sour | <i>Prunus cerasus</i> L. |
| FS 0244 | Cherry, Sweet | <i>Prunus avium</i> L. |
| Subgroup B Plums | | |
| FS 0014 | Plums (including Prunes) | <i>Prunus domestica</i> L.; other <i>Prunus</i> spp. and ssp. (includes all commodities in this subgroup) |
| FS 0242 | Cherry plum | <i>Prunus cerasifera</i> Ehrhart; Syn: <i>Prunus divaricata</i> Ledebor; <i>Prunus salicina</i> Lindl., var. <i>burbank</i> |
| FS 0302 | Jujube, Chinese | <i>Ziziphus jujuba</i> Mill. |
| FS 2234 | Plum | <i>Prunus domestica</i> L. |
| - | Plum, Japanese (see Plums) | <i>Prunus salicina</i> Lindley; Syn: <i>Prunus triflora</i> Roxb. |

**Draft Guidelines for Technical Meeting with Trade on 27 June 2013.
Subject to further revision.**

| Commodity | | |
|---------------------------|--|---|
| Code no. | Common name | Scientific name |
| - | Plum, American (see Sloe) | |
| FS 0249 | Sloe | <i>Prunus spinosa</i> L.; several wild <i>Prunus</i> spp. |
| - | Prunes (see Plums) | |
| Subgroup C Peaches | | |
| FS 2001 | Peaches (including Nectarine and Apricot) | (includes all commodities in this subgroup) |
| FS 0240 | Apricot | <i>Prunus armeniaca</i> L.; Syn: <i>Armeniaca vulgaris</i> Lamarck |
| FS 2237 | Japanese apricot | <i>Prunus mume</i> Siebold & Zucc. |
| FS 0245 | Nectarine | <i>Prunus persica</i> (L.) Batch, var. <i>nectarina</i> |
| FS 0247 | Peach | <i>Prunus persica</i> (L.) Batsch; Syn: <i>Prunus vulgaris</i> Mill. |

DRAFT

Group 4 – Berries and other small fruits (group letter code FB)

a. Portion of the commodity to which the MRL applies (and which is analysed):

Whole commodity after removal of caps and stems.

Currants, Black, Red, White: fruit with stem.

b. The following five subgroups have been identified:

- Subgroup A Cane berries – includes berries originating from canes that are erect or trailing, mainly *Rubus* species
- Subgroup B Bushberries – includes berries originating from woody shrubs
- Subgroup C “Large shrub/tree berries” – includes berries originating from large shrubs or trees
- Subgroup D “Small fruit vine climbing” – includes berries originating from climbing vines
- Subgroup E “Low growing berries” – includes berries originating from low growing berries that are short shrubs or herbaceous plants

c. Detailed classification:

| Commodity | | |
|--------------------------------|---|--|
| Code no. | Common name | Scientific name |
| FB 0018 | Berries and other small fruits | (includes all commodities in this group) |
| Subgroup A Cane berries | | |
| FB 2005 | Cane berries | <i>Rubus</i> species (includes all commodities in this subgroup) |
| FB 0264 | Blackberries | <i>Rubus fruticosus</i> auct. aggr., several ssp. |
| - | Boysenberry (see Dewberries) | Hybrid of <i>Rubus</i> spp. |
| FB 0266 | Dewberries (including Boysenberry and Loganberry) | <i>Rubus ceasius</i> L.; several <i>Rubus</i> ssp. and hybrids |
| - | Loganberry (see Dewberries) | <i>Rubus loganobaccus</i> L.H. Bailey, hybrid of <i>Rubus</i> spp. |
| FB 0272 | Raspberries, Red, Black | <i>Rubus idaeus</i> L.; <i>Rubus occidentalis</i> L. ; several <i>Rubus</i> spp. and hybrids, including wild raspberries <i>Rubus molluccanus</i> L. |

**Draft Guidelines for Technical Meeting with Trade on 27 June 2013.
Subject to further revision.**

| Commodity | | |
|--|--|--|
| Code no. | Common name | Scientific name |
| - | Youngberry (see Dewberries) | <i>Rubus ursinus</i> cv. "Young" |
| Subgroup B Bush berries | | |
| FB 2006 | Bush berries | (includes all commodities in this subgroup) |
| FB 0019 | Vaccinium berries (including Bearberry, except Cranberry) | <i>Vaccinium</i> spp.; <i>Arctostaphylos uva-ursi</i> (L.) Spreng. |
| FB 0020 | Blueberries | <i>Vaccinium corymbosum</i> L.; <i>Vaccinium angustifolium</i> Ait.; <i>Vaccinium virgatum</i> Aiton; <i>Gaylussacia</i> spp. |
| FB 0261 | Bilberry | <i>Vaccinium myrtillus</i> L. |
| FB 0262 | Bilberry, Bog | <i>Vaccinium uliginosum</i> L. |
| FB 0263 | Bilberry, Red | <i>Vaccinium vitis-idaea</i> L. |
| - | Blueberry, Highbush (see Blueberries) | <i>Vaccinium corymbosum</i> L. |
| - | Blueberry, Lowbush (see Blueberries) | <i>Vaccinium angustifolium</i> Ait. |
| - | Blueberry, Rabbiteye (see Blueberries) | <i>Vaccinium virgatum</i> Aiton |
| FB 0021 | Currants, Black, Red, White | <i>Ribes nigrum</i> L.; <i>Ribes rubrum</i> L. |
| FB 0278 | Currant, Black (see also Currants, Black, Red, White) | <i>Ribes nigrum</i> L. |
| FB 0279 | Currant, Red, White (see also Currants, Black, Red, White) | <i>Ribes rubrum</i> L. |
| FB 0268 | Gooseberry | <i>Ribes uva-crispa</i> L. Syn: <i>Ribes grossularia</i> L. |
| FB 2245 | Huckleberries | 1. Blueberries, see Blueberries FB 0020 2. <i>Gaylussacia</i> spp., see Blueberries FB 0020 Red Huckleberry (<i>Vaccinium parvifolium</i> L.) |
| FB 0270 | Juneberries | <i>Amelanchier</i> spp. |
| FB 0273 | Rose hips | <i>Rosa</i> L., several spp. |
| Subgroup C Large shrub/tree berries | | |
| FB 2007 | Large shrub/tree berries | (includes all commodities in this subgroup) |

Draft Guidelines for Technical Meeting with Trade on 27 June 2013.
Subject to further revision.

| Commodity | | |
|---|----------------------------------|--|
| Code no. | Common name | Scientific name |
| FB 2250 | Bayberries | <i>Morella</i> spp., except "bayberry, red" (see FT 2303) |
| FB 0267 | Elderberries | <i>Sambucus</i> spp. |
| FB 0271 | Mulberries | <i>Morus alba</i> L.; <i>Morus nigra</i> L.; <i>Morus rubra</i> L. |
| Subgroup D Small fruit vine climbing | | |
| FB 2008 | Small fruit vine climbing | (includes all commodities in this subgroup) |
| FB 0269 | Grapes | <i>Vitis vinifera</i> L., several cultivars |
| FB 2258 | Schisandraberry | <i>Schisandra chinensis</i> (Turcz.) Baill. |
| FB 1235 | Table-grapes | Special cultivars of <i>Vitis vinifera</i> L., suitable for direct human consumption |
| FB 1236 | Wine-grapes | Special cultivars of <i>Vitis vinifera</i> L., suitable for preparing juice and fermenting into wine |
| Subgroup E Low growing berries | | |
| FB 2009 | Low growing berries | (includes all commodities in this subgroup) |
| FB 0265 | Cranberry | <i>Vaccinium macrocarpon</i> Aiton |
| FB 0275 | Strawberry | <i>Fragaria x ananassa</i> Duchesne ex Rozier |

DRAFT

Group 5 – “Assorted tropical and sub-tropical fruits - edible peel”
(group letter code FT)

a. Portion of the commodity to which the MRL applies (and which is analysed):

Whole commodity.

Dates, olives and similar fruits with hard seeds: Whole commodity after removal of stems and stones but residue calculated and expressed on the whole fruit.

b. The following three subgroups have been identified:

- Subgroup A “Assorted tropical and sub-tropical fruits - edible peel” – small
- Subgroup B “Assorted tropical and sub-tropical fruits - edible peel” – medium to large
- Subgroup C “Assorted tropical and sub-tropical fruits - edible peel” – palms

c. Detailed classification:

| Commodity | | |
|---|--|---|
| Code no. | Common name | Scientific name |
| FT 0026 | Assorted tropical and sub-tropical fruits - edible peel | (includes all commodities in this group) |
| Subgroup A “Assorted tropical and sub-tropical fruits - edible peel” – small | | |
| FT 2011 | “Assorted tropical and sub-tropical fruits - edible peel” – small | (includes all commodities in this subgroup) |
| - | Acerola (see Barbados cherry) | |
| FT 0287 | Barbados cherry | <i>Malpighia emarginata</i> DC.; Syn: <i>Malpighia glabra</i> L. |
| FT 2303 | Bayberry, Red | <i>Morella rubra</i> Lour. |
| FT 0293 | Chinese olive, Black, White | <i>Canarium tramdenum</i> C. D. Dai & Yakovlev; Syn: <i>Canarium pimela</i> K. D. Koenig; <i>Canarium album</i> (Lour.) Raeusch. |
| FT 0305 | Tables Olives | <i>Olea europaea</i> L., var. <i>europaea</i> |

**Draft Guidelines for Technical Meeting with Trade on 27 June 2013.
Subject to further revision.**

| Commodity | | |
|---|--|---|
| Code no. | Common name | Scientific name |
| FT 0340 | Java apple (wax jambu) | <i>Syzigium samarangense</i> (Bl.) Merr. & Perry; Syn: <i>Eugenia javanica</i> Lam |
| Subgroup B “Assorted tropical and sub-tropical fruits - edible peel” – medium to large | | |
| FT 2012 | “Assorted tropical and sub-tropical fruits - edible peel” – large | (includes all commodities in this subgroup) |
| FT 0289 | Carambola | <i>Averrhoa carambola</i> L. |
| FT 0297 | Fig | <i>Ficus carica</i> L. |
| FT 2356 | Gooseberry, Indian | <i>Phyllanthus emblica</i> L. |
| FT 0336 | Guava | <i>Psidium guajava</i> L. |
| FT 0300 | Jaboticaba | <i>Myrciaria cauliflora</i> O. Berg.; Syn: <i>Eugenia cauliflora</i> DC. |
| FT 2371 | Noni | <i>Morinda citrifolia</i> L. |
| FT 0309 | Rose apple | <i>Syzigium jambos</i> (L.) Alston; Syn: <i>Eugenia jambos</i> L. |
| Subgroup C “Assorted tropical and sub-tropical fruits - edible peel” – palms | | |
| FT 2013 | “Assorted tropical and sub-tropical fruits - edible peel” - palms | (includes all commodities in this subgroup) |
| FT 0295 | Date | <i>Phoenix dactylifera</i> L. |

Group 6 – “Assorted tropical and sub-tropical fruits - inedible peel”
(group letter code FI)

a. Portion of the commodity to which the MRL applies (and which is analysed):

Whole fruit unless qualified: e.g., banana pulp.

Pineapple after removal of crown.

Avocado, mangos and similar fruit with hard seeds: Whole commodity after removal of stone but residue calculated and expressed on whole fruit.

b. The following six subgroups have been identified:

- Subgroup A “Assorted tropical and sub-tropical fruits - inedible peel” – small
- Subgroup B “Assorted tropical and sub-tropical fruits - inedible smooth peel” - large
- Subgroup C “Assorted tropical and sub-tropical fruits - inedible rough or hairy peel” - large
- Subgroup D “Assorted tropical and sub-tropical fruits - inedible peel” - cactus
- Subgroup E “Assorted tropical and sub-tropical fruits - inedible peel” - vines
- Subgroup F “Assorted tropical and sub-tropical fruits - inedible peel” – palms

c. Detailed classification:

| Commodity | | |
|---|---|---|
| Code no. | Common name | Scientific name |
| FI 0030 | Assorted tropical and sub-tropical fruits - inedible peel | (includes all commodities in this group) |
| Subgroup A “Assorted tropical and sub-tropical fruits - inedible peel” – small | | |
| FI 2021 | “Assorted tropical and sub-tropical fruits - inedible peel” – small | (includes all commodities in this subgroup) |

Draft Guidelines for Technical Meeting with Trade on 27 June 2013.
Subject to further revision.

| Commodity | | |
|--|---|---|
| Code no. | Common name | Scientific name |
| FI 0343 | Litchi | <i>Litchi chinensis</i> Sonn.; Syn: <i>Nephelium litchi</i> Camb. |
| FI 0342 | Longan | <i>Dimocarpus longan</i> Lour. Syn: <i>Nephelium longana</i> (Lam.) Camb.; <i>Euphoria longana</i> Lam. |
| FI 0366 | Spanish lime | <i>Melicoccus bijugatus</i> Jacq.; Syn: <i>Melicocca bijuga</i> L. |
| FI 0369 | Tamarind | <i>Tamarindus indica</i> L., sweet varieties |
| FI 2463 | Wampi | <i>Clausena lansium</i> (Lour.) Skeels |
| Subgroup B “Assorted tropical and sub-tropical fruits - inedible smooth peel” – large | | |
| FI 2022 | “Assorted tropical and sub-tropical fruits - inedible smooth peel” – large | (includes all commodities in this subgroup) |
| FI 0326 | Avocado | <i>Persea americana</i> Mill. |
| FI 0327 | Banana | Subsp. and cultivars of <i>Musa</i> species and hybrids |
| - | Banana, Dwarf (see Banana) | <i>Musa</i> hybrids, AAA group Syn: <i>Musa acuminata</i> Colla “Dwarf Cavendish”; <i>Musa cavendishii</i> Lambert; <i>Musa nana</i> Lour. |
| FI 0330 | Canistel | <i>Pouteria campechiana</i> (Kunth.) Baenhi; this species includes former <i>Lacuma nervosa</i> A. DC. and <i>Lacuma salicifolia</i> Kunth. |
| FI 0335 | Feijoa | <i>Acca sellowiana</i> (O. Berg) Burret; Syn: <i>Feijoa sellowiana</i> (O. Berg) O. Berg |
| FI 2488 | Langsat | <i>Lansium domesticum</i> Corrêa Syn: <i>Aglaiia domestica</i> ; <i>Aglaiia dookoo</i> |
| FI 0345 | Mango | <i>Mangifera indica</i> L. |
| FI 0346 | Mangostan | <i>Garcinia mangostana</i> L. |
| FI 0350 | Papaya | <i>Carica papaya</i> L. |
| FI 0352 | Persimmon, American | <i>Diospyros virginiana</i> L. |
| - | Plantain (see Banana) | <i>Musa x paradisiaca</i> L., var. <i>sapientum</i> (L.) Kuntze |
| FI 0355 | Pomegranate | <i>Punica granatum</i> L. |
| FI 0360 | Sapote, Black | <i>Diospyros digyna</i> Jacq. Syn: <i>Diospyros ebenaster</i> Retz. |
| FI 0363 | Sapote, White | <i>Casimiroa edulis</i> La Llave & Lex |
| FI 0367 | Star apple | <i>Chrysophyllum cainito</i> L. |

**Draft Guidelines for Technical Meeting with Trade on 27 June 2013.
Subject to further revision.**

| Commodity | | |
|--|---|--|
| Code no. | Common name | Scientific name |
| Subgroup C “Assorted tropical and sub-tropical fruits – inedible rough or hairy peel” – large | | |
| FI 2023 | “Assorted tropical and sub-tropical fruits – inedible rough or hairy peel” – large | (includes all commodities in this subgroup) |
| FI 2520 | Atemoya | <i>Annona x atemoya</i> Mabb. |
| FI 0329 | Breadfruit | <i>Artocarpus altilis</i> (Parkinson) Fosberg Syn: <i>Artocarpus communis</i> J.R. et G. Forster |
| FI 0331 | Cherimoya | <i>Annona cherimola</i> Mill. |
| FI 0332 | Custard apple | <i>Annona reticulata</i> L. |
| FI 0334 | Durian | <i>Durio zibethinus</i> L. |
| FI 0337 | llama | <i>Annona macrophyllata</i> Donn. Sm. Syn: <i>Annona diversifolia</i> Saff. |
| FI 0338 | Jackfruit | <i>Artocarpus heterophyllus</i> Lam.; Syn: <i>Artocarpus integrifolia</i> auct |
| FI 0353 | Pineapple | <i>Ananas comosus</i> (L.) Merril |
| FI 0357 | Pulasan | <i>Nephelium ramboutan-ake</i> (Labill.) Leenh. |
| FI 0358 | Rambutan | <i>Nephelium lappaceum</i> L. |
| FI 0359 | Sapodilla | <i>Manilkara zapota</i> (L.) P. Royen Syn: <i>Manilkara achras</i> (Mill.) Fosberg; <i>Achras zapota</i> L. |
| FI 0362 | Sapote, Mammey | <i>Pouteria sapota</i> (Jacq.) H.E. Moore & Stearn; Syn: <i>Calocarpum sapota</i> (Jacq.) Merr. |
| FI 0365 | Soursop | <i>Annona muricata</i> L. |
| FI 0368 | Sugar apple | <i>Annona squamosa</i> L. |
| Subgroup D “Assorted tropical and sub-tropical fruits - inedible peel” – cactus | | |
| FI 2024 | “Assorted tropical and sub-tropical fruits - inedible peel” – cactus | (includes all commodities in this subgroup) |
| - | Dragon fruit (see Pitaya) | <i>Hylocereus undatus</i> (Haw.) Britton & Rose |
| FI 2540 | Pitaya | <i>Hylocereus</i> spp.; <i>Hylocereus undatus</i> (Haw.) Britton & Rose; <i>Hylocereus megalanthus</i> (K.Schum. Ex Vaupel) Ralf Bauer; <i>Hylocereus polyrhizus</i> (F.A.C. Weber) Britton & Rose; <i>Hylocereus ocamponis</i> (Salm-Dyck) Britton & Rose; <i>Hylocereus triangularis</i> (L.) Britton & Rose |

**Draft Guidelines for Technical Meeting with Trade on 27 June 2013.
Subject to further revision.**

| Commodity | | |
|---|--|--|
| Code no. | Common name | Scientific name |
| FI 0356 | Prickly pear | <i>Opuntia ficus-indica</i> (L.) P. Miller; <i>Opuntia engelmannii</i> Salm-Dyck ex Engelm. var. <i>lindheimeri</i> (Engelman.) B.D. Parfitt & Pinkava |
| Subgroup E “Assorted tropical and sub-tropical fruits - inedible peel” – vines | | |
| FI 2025 | “Assorted tropical and sub-tropical fruits - inedible peel” – vines | (includes all commodities in this subgroup) |
| - | Chinese gooseberry (see Kiwifruit) | |
| FI 0341 | Kiwifruit | <i>Actinidia deliciosa</i> (A. Chev.) C. F. Liang & A. R. Ferguson; <i>Actinidia chinensis</i> Planch. and hybrids |
| FI 0351 | Passion fruit | Cultivars of <i>Passiflora edulis</i> Sims |
| Subgroup F “Assorted tropical and sub-tropical fruits - inedible peel” – palms | | |
| FI 2026 | “Assorted tropical and sub-tropical fruits - inedible peel” – palms | (includes all commodities in this subgroup) |
| FI 2580 | Coconut, Young | <i>Cocos nucifera</i> L. |

DRAFT

II. Special notes to reader on food type “01 FRUITS”

1. Melon-type fruits such as melon, watermelon, cantaloupe, etc., belong to “Fruiting vegetables – Cucurbits”.
2. Taking into consideration the water content and percentage of sugar, the similar use pattern of pesticides and the residues behaviour, and the portion of the commodity to which the MRLs apply, “Persimmon, Japanese” and “Persimmon, Chinese” are grouped under “pome fruits”; whereas “Persimmon, American” is grouped under “Assorted tropical and sub-tropical fruits – inedible peel”.
3. Coconut belongs to “Tree nuts” whereas “Coconut, Young” is grouped under “Assorted tropical and sub-tropical fruits – inedible peel”.
4. Goji berries and ground cherries belong to “Fruiting vegetables other than Cucurbits”.

DRAFT

02 VEGETABLES

I. Classification

Group 9 – Bulb vegetables (group letter code VA)

- a. Portion of the commodity to which the MRL applies (and which is analysed):

Bulb/dry onions and garlic: Whole commodity after removal of roots and adhering soil and whatever parchment skin is easily detached.

Leeks and spring onions: Whole vegetable after removal of roots and adhering soil.

- b. No subgroup has been identified under this food group.

- c. Detailed classification:

| Commodity | | |
|-----------|------------------------|---|
| Code no. | Common name | Scientific name |
| VA 0035 | Bulb vegetables | (includes all commodities in this group) |
| VA 4155 | Chives | <i>Allium schoenoprasum</i> L. |
| VA 4157 | Chives, Chinese | <i>Allium tuberosum</i> Rottler ex Spreng.; Syn: <i>Allium odoratum</i> L. |
| VA 0380 | Fennel, Bulb | <i>Foeniculum vulgare</i> Mill.; Syn: <i>Foeniculum officinale</i> All. • var. <i>dulce</i> (Mill.) Thell.; Syn: <i>Foeniculum dulce</i> Mill.; • var. <i>azoricum</i> (Mill.) Thell.; Syn: <i>Foeniculum azoricum</i> Mill. |
| VA 0381 | Garlic | <i>Allium sativum</i> L. |
| VA 0382 | Garlic, Great-headed | <i>Allium ampeloprasum</i> L., var. <i>ampeloprasum</i> |
| VA 0383 | Kurrat | <i>Allium ampeloprasum</i> L., var. <i>kurrat</i> Schweinf. ex Krause Syn: <i>Allium kurrat</i> Schweinf. ex K. Krause |
| VA 0384 | Leek | <i>Allium porrum</i> L.; Syn: <i>Allium ampeloprasum</i> L., var. <i>porrum</i> (L.) Gay |
| - | Lily | <i>Lilium</i> spp. |

**Draft Guidelines for Technical Meeting with Trade on 27 June 2013.
Subject to further revision.**

| Commodity | | |
|------------------|--------------------------------|---|
| Code no. | Common name | Scientific name |
| VA 0385 | Onion, Bulb | <i>Allium cepa</i> L. var. <i>cepa</i> , various cultivars |
| VA 0386 | Onion, Chinese | <i>Allium chinense</i> G. Don; Syn: <i>Allium bakeri</i> Regel |
| - | Onion, Pearl | <i>Allium porrum</i> L. var. <i>sectivum</i> Lueder |
| VA 0387 | Onion, Welsh | <i>Allium fistulosum</i> L. |
| VA 4171 | Rakkyo (see Onion, Chinese) | |
| VA 0388 | Shallot | <i>Allium ascalonicum</i> L.; Syn: <i>Allium cepa</i> L., var. <i>aggregatum</i> G. Don |
| VA 0390 | Silverskin onion | <i>Allium cepa</i> L. |
| VA 0389 | Spring onion | <i>Allium cepa</i> L., various cultivars, a.o. White Lisbon; White Portugal |
| VA 0391 | Tree onion | <i>Allium cepa</i> L., var. <i>proliferum</i> Targioni-Tozzetti; Syn: <i>Allium cepa</i> L., var. <i>bulbiferum</i> Bailey; <i>Allium cepa</i> L., var. <i>viviparum</i> (Metz.) Alef |

DRAFT

Group 10 – Brassica (cole or cabbage) vegetables, Head cabbages, Flowerhead brassicas (group letter code VB)

a. Portion of the commodity to which the MRL applies (and which is analysed):

Head cabbages and Kohlrabi: Whole commodity as marketed, after removal of obviously decomposed or withered leaves.

Cauliflower and broccoli: flower heads (immature inflorescence only).

Brussels sprouts: “buttons” only.

b. One subgroup has been identified:

- Subgroup A Flowerhead Brassicas – includes Broccoli, “Broccoli, Chinese” and Cauliflower

c. Detailed classification:

| Commodity | | |
|-----------|---|---|
| Code no. | Common name | Scientific name |
| VB 0040 | Brassica (cole or cabbage) vegetables, Head cabbages, Flowerhead brassicas | (includes all commodities in this group) |
| VB 0041 | Cabbages, Head | <i>Brassica oleracea</i> L., var. <i>capitata</i> L., several subvar. and cvs. Syn: <i>Brassica oleracea</i> L., convar. <i>capitata</i> L. |
| VB 0402 | Brussels sprouts | <i>Brassica oleracea</i> L., var. <i>gemmifera</i> (DC.) Zenker Syn: <i>Brassica oleracea</i> L., convar. <i>oleracea</i> L., var. <i>gemmifera</i> DC. |
| VB 4175 | Cabbage (see Cabbages, Head) | |
| VB 4177 | Cabbage, Green (see Cabbage, Savoy) | |
| VB 4179 | Cabbage, Red (see Cabbages, Head,) | <i>Brassica oleracea</i> L. var. <i>capitata</i> L., subvar. <i>rubra</i> Syn: <i>Brassica oleracea</i> L., convar. <i>capitata</i> L., var. <i>rubra</i> |
| VB 4181 | Cabbage, Oxhead (see Cabbages, Head) | <i>Brassica oleracea</i> L., var. <i>capitata</i> L., subvar. <i>alba</i> , forma <i>conica</i> Syn: <i>Brassica oleracea</i> L., convar. <i>capitata</i> L., var. <i>alba</i> , forma <i>conica</i> |
| VB 4185 | Cabbage, White (see Cabbages, Head) | <i>Brassica oleracea</i> L., var. <i>capitata</i> L., subvar. <i>alba</i> Syn: <i>Brassica oleracea</i> L., convar. <i>capitata</i> L., var. <i>alba</i> |

**Draft Guidelines for Technical Meeting with Trade on 27 June 2013.
Subject to further revision.**

| Commodity | | |
|--|--|---|
| Code no. | Common name | Scientific name |
| VB 0403 | Cabbage, Savoy (see also Cabbages, Head) | <i>Brassica oleracea</i> L., var. <i>capitata</i> L., subvar. <i>sabauda</i> L. Syn: <i>Brassica oleracea</i> L., convar. <i>capitata</i> L., var. <i>sabauda</i> L. |
| VB 4187 | Cabbage, Yellow (see Cabbage, Savoy) | |
| VB 0405 | Kohlrabi | <i>Brassica oleracea</i> L., var. <i>gongylodes</i> L. Syn: <i>Brassica oleracea</i> L., convar. <i>acephala</i> , var. <i>gongylodes</i> |
| Subgroup A Flowerhead Brassicas | | |
| VB 0042 | Flowerhead brassicas (includes Broccoli, “Broccoli, Chinese” and Cauliflower) | (includes all commodities in this subgroup) |
| VB 0400 | Broccoli | <i>Brassica oleracea</i> L., var. <i>italica</i> Plenck Syn: <i>Brassica oleracea</i> L., convar. <i>botrytis</i> L., var. <i>italica</i> Plenck |
| VB 0401 | Broccoli, Chinese | <i>Brassica oleracea</i> var. <i>alboglabra</i> (L.H. Bailey) Musil Syn: <i>Brassica oleracea</i> L., var. <i>alboglabra</i> Bailey; <i>Brassica oleracea</i> L., var. <i>albiflora</i> Kuntze |
| VB 4173 | Broccoli, Sprouting (see Broccoli) | |
| VB 0404 | Cauliflower | <i>Brassica oleracea</i> L., var. <i>botrytis</i> L., several forms and cvs (white and green) Syn: <i>Brassica oleracea</i> L., convar. <i>botrytis</i> L., var. <i>botrytis</i> L. |
| VB 4189 | Cauliflower, Green (see Cauliflower) | |
| VB 4191 | Kailan (see Broccoli, Chinese) | |

Group 11 – Fruiting vegetables, Cucurbits (group letter code VC)

a. Portion of the commodity to which the MRL applies (and which is analysed): **Whole commodity after removal of stems.**

b. One subgroup has been identified:

- Subgroup A “Melons, except Watermelon”

c. Detailed classification:

| Code no. | Common name | Scientific name |
|----------|---|---|
| VC 0045 | Fruiting vegetables, Cucurbits | (includes all commodities in this group) |
| VC 0421 | Balsam pear | <i>Momordica charantia</i> L. Syn: <i>Momordica charantia</i> L. var. <i>abbreviata</i> Ser. |
| VC 4195 | Bitter gourd (see Balsam pear) | |
| VC 4197 | Bitter melon (see Balsam pear) | |
| VC 0422 | Bottle gourd | <i>Lagenaria siceraria</i> (Molina) Standl.; Syn: <i>Lagenaria vulgaris</i> Ser.; <i>Lagenaria leucantha</i> (Duch.) Rusby |
| VC 0423 | Chayote | <i>Sechium edule</i> (Jacq.) Swartz; Syn: <i>Chayota edulis</i> Jacq. |
| VC 0424 | Cucumber | <i>Cucumis sativus</i> L.; English and forcing cucumber cultivars |
| VC 0425 | Gherkin | <i>Cucumis sativus</i> L.; pickling cucumber cultivars |
| VC 0427 | Loofah, Angled | <i>Luffa acutangula</i> (L.) Roxb. |
| VC 0428 | Loofah, Smooth | <i>Luffa aegyptiaca</i> Mill.; Syn: <i>Luffa cylindrica</i> (L.) M. J. Roem. |
| VC 0429 | Pumpkins | Mature cultivars of <i>Cucurbita maxima</i> Duch. ex Lam.; <i>Cucurbita mixta</i> Pang.; <i>Cucurbita moschata</i> (Duch. ex Lam.) Duch. ex Poir and <i>Cucurbita pepo</i> L. |
| VC 4251 | Vegetable spaghetti (see Pumpkins) | <i>Cucurbita pepo</i> |
| VC 0433 | Winter squash (see Pumpkins) | Mature cultivars of <i>Cucurbita maxima</i> Duch. ex Lam.; <i>Cucurbita mixta</i> Pang.; <i>Cucurbita Moschata</i> (Duch. ex Lam.) Duch. ex Poir and <i>Cucurbita pepo</i> L. |
| VC 0430 | Snake gourd | <i>Trichosanthes cucumerina</i> L.; Syn: <i>Trichosanthes anguina</i> L. |

Draft Guidelines for Technical Meeting with Trade on 27 June 2013.
Subject to further revision.

| Code no. | Common name | Scientific name |
|---|----------------------------------|---|
| VC 0431 | Squash, Summer | <i>Cucurbita pepo</i> L., var. <i>meloepo</i> Alef several cultivars, immature |
| VC 4263 | Zucchini (see Squash, Summer) | |
| VC 0432 | Watermelon | <i>Citrullus lanatus</i> (Thunb.) Matsum. & Nakai Syn: <i>Citrullus vulgaris</i> Schrad.; <i>Colocynthis citrullus</i> (L.) O. Ktze. |
| VC 4205 | Citron melon (see Watermelon) | <i>Citrullus lanatus</i> (Thunb.) Mansf., var. <i>edulis</i> ; Syn: <i>Citrullus edulis</i> Pang. |
| VC 4255 | Wax gourd | <i>Benincasa hispida</i> (Thunb.) Cogn.; Syn: <i>Benincasa cerifera</i> Savi |
| - | Hairy gourd | <i>Benincasa hispida</i> (Thunb.) Cogn., var. <i>chieh-qua</i> How |
| Subgroup A Melons, except Watermelon | | |
| VC 0046 | Melons, except Watermelon | Several var. and cultivars of <i>Cucumis melo</i> L. (includes all commodities in this subgroup) |
| VC 4199 | Cantaloupe | <i>Cucumis melo</i> L., var. <i>cantaloupensis</i> Naud. |
| VC 4219 | Melon, Honeydew | Cultivar of Winter, or White-skinned Melon <i>Cucumis melo</i> L., var. <i>inodorus</i> Naud. |
| VC 4225 | Melon, Oriental Pickling | <i>Cucumis melo</i> L., var. <i>conomon</i> Mak |
| VC 4239 | Muskmelon | Cultivar of <i>Cucumis melo</i> L., var. <i>reticulatus</i> Naud. |
| - | Hami melon | <i>Cucumis melo</i> L., var. <i>saccharinus</i> Naud. |

Group 12 – Fruiting vegetables, other than Cucurbits (group letter code VO)

a. Portion of the commodity to which the MRL applies (and which is analysed): **Whole commodity after removal of stems.**

Mushrooms: Whole commodity.

Sweet corn and fresh corn: kernels plus cob without husk.

b. The following two subgroups have been identified:

- Subgroup A Peppers
- Subgroup B “Fungi, Edible (not including mushrooms)”

c. Detailed classification:

| Commodity | | |
|------------------|--|---|
| Code no. | Common name | Scientific name |
| VO 0050 | Fruiting vegetables, other than Cucurbits | (includes all commodities in this group) |
| VO 4275 | Cherry tomato | <i>Lycopersicon esculentum</i> var. <i>cerasiforme</i> (Dunal) A. Gray Syn: <i>Solanum lycopersicum</i> L. var. <i>cerasiforme</i> (Dunal) D.M. Spooner, G.J. Anderson & R.K. Jansen |
| VO 4279 | Chinese lantern plant (see Ground cherries) | |
| VO 0440 | Egg plant | <i>Solanum melongena</i> L., several var. and cultivars |
| VO 0449 | Fungi, Edible (not including mushrooms) | |
| - | Goji berry (Wolfberry) | <i>Lycium barbarum</i> L.; <i>Lycium chinense</i> Mill. |
| VO 0441 | Ground cherries | <i>Physalis alkekengi</i> L.; <i>Physalis ixocarpa</i> Brot. ex Horn.; <i>Physalis peruviana</i> L. |
| VO 0450 | Mushrooms | Cultivated cultivars of <i>Agaricus</i> spp. Syn: <i>Psalliota</i> spp., mainly <i>Agaricus bisporus</i> (Codex Stan. 55-1981) |
| VO 0442 | Okra | <i>Abelmoschus esculentus</i> (L.) Moench; Syn: <i>Hibiscus esculentus</i> L. |
| VO 0443 | Pepino | <i>Solanum muricatum</i> L. |
| VO 0446 | Roselle | <i>Hibiscus sabdariffa</i> L., var. <i>sabdariffa</i> L. |
| VO 0447 | Sweet corn (corn-on-the-cob) | <i>Zea mays</i> L., var. <i>saccharata</i> Sturt (Codex Stan. 133-1981); Syn: <i>Zea mays</i> L., var. <i>rugosa</i> Bonof. |
| VO 1275 | Sweet corn (kernels) | (see Codex Stan. 132-1981) |

**Draft Guidelines for Technical Meeting with Trade on 27 June 2013.
Subject to further revision.**

| Commodity | | |
|---------------------------|--|---|
| Code no. | Common name | Scientific name |
| - | Thai eggplant | <i>Solanum undatum</i> Jacq. non Lam. |
| VO 4309 | Tomatillo | <i>Physalis ixocarpa</i> Brot. ex Horn. |
| VO 0448 | Tomato | <i>Lycopersicon esculentum</i> Mill.; Syn: <i>Solanum lycopersicum</i> L. |
| Subgroup A Peppers | | |
| VO 0051 | Peppers | (includes Peppers, Chili and Peppers, Sweet) |
| VO 4269 | Bell pepper (see Peppers, Sweet) | |
| VO 4281 | Cluster pepper (see Peppers, Chili) | <i>Capsicum annuum</i> L., var. <i>fasciculatum</i> (Sturt.) Irish |
| VO 4283 | Cone pepper (see Peppers, Chili) | |
| VO 0444 | Peppers, Chili | <i>Capsicum annuum</i> L.; several pungent cultivars |
| VO 4301 | Peppers, Long (see Peppers, Sweet) | <i>Capsicum annuum</i> L., var. <i>longum</i> (D.C.) Sendtn. |
| VO 0445 | Peppers, Sweet (including pimento or pimiento) | <i>Capsicum annuum</i> , var. <i>grossum</i> (L.) Sendtn. and var. <i>longum</i> (D.C.) Sendtn. |

DRAFT

Group 13 – Leafy vegetables (including Brassica leafy vegetables)
(group letter code VL)

a. Portion of the commodity to which the MRL applies (and which is analysed): **Whole commodity as usually marketed, after removal of obviously decomposed or withered leaves.**

b. One subgroup has been identified:

- Subgroup A Brassica leafy vegetables

c. Detailed classification:

| Commodity | | |
|-----------|---|---|
| Code no. | Common name | Scientific name |
| VL 0053 | Leafy vegetables (including Brassica leafy vegetables) | (includes all commodities in this group) |
| VL 0460 | Amaranth | <i>Amaranthus</i> spp.; including <i>Amaranthus spinosus</i> L.; <i>Amaranthus dubius</i> C. Mart. ex Thell.; <i>Amaranthus hypochondriacus</i> L.; <i>Amaranthus cruentus</i> L.; <i>Amaranthus viridis</i> L.; <i>Amaranthus tricolor</i> L.; Syn: <i>Amaranthus mangostanus</i> L. |
| VL 0421 | Balsam pear leaves | <i>Momordia charantia</i> L. |
| VL 4317 | Beet leaves (see Chard) | |
| VL 0461 | Betel leaves | <i>Piper betle</i> L. |
| VL 0462 | Boxthorn | <i>Lycium chinense</i> Mill. |
| VL 0464 | Chard | <i>Beta vulgaris</i> L. subsp. <i>vulgaris</i> var. <i>cicla</i> L.; <i>Beta vulgaris</i> L. subsp. <i>vulgaris</i> var. <i>vulgaris</i> |
| - | Chayote leaves | <i>Sechium edule</i> (Jacq.) Sw. |
| VL 0465 | Chervil | <i>Anthriscus cerefolium</i> (L.) Hoffmann |
| VL 0469 | Chicory leaves (green and red cultivars) | <i>Cichorium intybus</i> L., var. <i>foliosum</i> Hegi |
| - | Chrysanthemum, edible leaved | <i>Glebionis</i> spp. |
| - | Chrysanthemum, garland (See Chrysanthemum, edible leaved) | <i>Glebionis coronaria</i> (L.) Cass. ex Spach; Syn: <i>Chrysanthemum coronarium</i> L. |

**Draft Guidelines for Technical Meeting with Trade on 27 June 2013.
Subject to further revision.**

| Commodity | | |
|------------------|--|---|
| Code no. | Common name | Scientific name |
| | Chrysanthemum, corn (See Chrysanthemum, edible leaved) | <i>Glebionis segetum</i> (L.) Fourr.; Syn: <i>Chrysanthemum segetum</i> L. |
| VL 0470 | Corn salad | <i>Valerianella locusta</i> (L.) Laterrade; Syn: <i>Valerianella olitoria</i> Poll. |
| VL 0510 | Cos lettuce | <i>Lactuca sativa</i> L., var. <i>romana</i> <i>Lactuca sativa</i> L., var. <i>longifolia</i> |
| VL 4335 | Crisphead lettuce (see Lettuce, Head) | |
| VL 4339 | Cutting lettuce (see Lettuce, Leaf) | |
| VL 0474 | Dandelion | <i>Taraxacum officinale</i> F. H. Wigg. |
| VL 0476 | Endive | <i>Cichorium endivia</i> L. |
| VL 0269 | Grape leaves | <i>Vitis vinifera</i> L. |
| VL 0507 | Kangkung | <i>Ipomoea aquatica</i> Forssk.; Syn: <i>Ipomoea reptans</i> Poir. |
| VL 4357 | Lambs lettuce (see Corn salad) | |
| VL 0482 | Lettuce, Head | <i>Lactuca sativa</i> L., var. <i>capitata</i> , several cultivars |
| VL 0483 | Lettuce, Leaf | <i>Lactuca sativa</i> L., var. <i>crispa</i> L., several cultivars; Syn: <i>Lactuca sativa</i> , var. <i>foliosa</i> |
| VL 4359 | Lettuce, Red (see Lettuce, Head) | Red cultivar of <i>Lactuca sativa</i> , var. <i>capitata</i> |
| - | Perilla leaves | <i>Perilla frutescens</i> (L.) Britton var. <i>frutescens</i> |
| VL 0490 | Plantain leaves | <i>Plantago major</i> L. |
| VL 0492 | Purslane | <i>Portulaca oleracea</i> L., ssp. <i>sativa</i> (Haw) Celak. |
| VL 0494 | Radish leaves (including radish tops) | <i>Raphanus sativus</i> L., several var. |
| VL 4371 | Red-leaved chicory (see Chicory leaves) | |
| VL 4372 | Rocket salad (see Rucola,) | |
| VL 0496 | Rucola | <i>Eruca vesicaria</i> (L.) Cav. ssp <i>sativa</i> Mill. <i>Eruca sativa</i> L. |
| VL 0498 | Salsify leaves | <i>Tragopogon porrifolium</i> L.; <i>Scorzonera hispanica</i> L. |

**Draft Guidelines for Technical Meeting with Trade on 27 June 2013.
Subject to further revision.**

| Commodity | | |
|---|---------------------------------------|---|
| Code no. | Common name | Scientific name |
| - | Shepherd's purse | <i>Capsella bursa-pastoris</i> (L.) Medik. |
| VL 0502 | Spinach | <i>Spinacia oleracea</i> L. |
| VL 0503 | Spinach, Indian | <i>Basella alba</i> L.; Syn: <i>Basella rubra</i> L. |
| VL 0508 | Sweet potato, leaves | <i>Ipomoea batatas</i> (L.) Lam. |
| VL 4379 | Swiss chard (see Chard) | |
| VL 0505 | Taro leaves | <i>Colocasia esculenta</i> (L.) Schott |
| - | Water shield | <i>Brasenia schreberi</i> J.F. Gmel. |
| VL 4389 | Water spinach (see Kangkung) | |
| VL 0473 | Watercress | <i>Nasturtium officinale</i> R. Br. and a hybrid of <i>Nasturtium officinalis</i> R. Br. x <i>Nasturtium microphyllum</i> (Boenningh.) Rchb. |
| - | Yam leaves | <i>Dioscorea</i> spp. |
| Subgroup A Brassica leafy vegetables | | |
| VL 0054 | Brassica leafy vegetables | <i>Brassica</i> spp. (includes all commodities in this subgroup) |
| - | Big-stem mustard (see Mustard greens) | <i>Brassica juncea</i> (L.) Czern subsp. <i>tsatsai</i> (T.L. Mao) Gladis |
| VL 4329 | Celery cabbage (see Chinese cabbage) | |
| VL 4331 | Celery mustard (see Pak-choi) | |
| VL 0467 | Chinese cabbage (type Pe-tsai) | <i>Brassica pekinensis</i> (Lour.) Rupr., several cultivars Syn: <i>Brassica rapa</i> L., ssp <i>pekinensis</i> (Lour.) Hanelt |
| - | Chinese flat cabbage | <i>Brassica rapa</i> L. subsp. <i>narinosa</i> (L.H. Bailey) Hanelt |
| VL 0468 | Choisum (Flowering white cabbage) | <i>Brassica rapa</i> L. subsp. <i>chinensis</i> (L.) Hanelt var. <i>parachinensis</i> (L.H. Bailey) Hanelt., several cultivars Syn: <i>Brassica parachinensis</i> L. H. Bailey |
| VL 4332 | Collard (see Kale) | |
| VL 0478 | Indian mustard | <i>Brassica juncea</i> (L.) Czern. |

Draft Guidelines for Technical Meeting with Trade on 27 June 2013.
Subject to further revision.

| Commodity | | |
|------------------|--|--|
| Code no. | Common name | Scientific name |
| VL 0480 | Kale (including among others: Collards, Curly kale, Scotch kale, Thousand-headed kale; not including Marrow-stem kale) | <i>Brassica oleracea</i> L., convar. <i>acephala</i> (DC.) Alef., var. <i>acephala</i> ; <i>Brassica oleracea</i> L., var. <i>sabellica</i> L.; <i>Brassica oleracea</i> L., var. <i>ramosa</i> DC. L; <i>Brassica oleracea</i> L., var. <i>palmifolia</i> DC. |
| - | Leaf mustard (see Mustard greens) | <i>Brassica juncea</i> (L.) Czern. subsp. <i>integrifolia</i> (H. West) Thell. |
| VL 0485 | Mustard greens | <i>Brassica juncea</i> (L.) Czern., several cultivars |
| - | Mustard, tuberous rooted, Chinese | <i>Brassica juncea</i> (L.) Czern. subsp. <i>napiformis</i> (Pailleux & Bois) |
| VL 0466 | Pak-choi or Paksoi, Chinese cabbage (type Pak-choi) | <i>Brassica rapa</i> subsp. <i>chinensis</i> (L.) Hanelt, several cultivars; Syn: <i>Brassica campestris</i> , ssp. <i>chinensis</i> (L.) Makino; <i>Brassica chinensis</i> L. |
| VL 0506 | Turnip greens | <i>Brassica rapa</i> L., var. <i>rapa</i> ; Syn: <i>Brassica campestris</i> L., var. <i>rapifera</i> Metz. |

DRAFT

Group 14 – Legume vegetables (group letter code VP)

- a. Portion of the commodity to which the MRL applies (and which is analysed): **Whole commodity, unless otherwise specified.**
- b. Four subgroups have been identified:
- Subgroup A Beans, except broad bean and soya bean (young pods and succulent seeds)
 - Subgroup B Beans, shelled (succulent seeds)
 - Subgroup C Peas (young pods and succulent seeds)
 - Subgroup D Peas, shelled (succulent seeds)
- c. Detailed classification:

| Commodity | | |
|------------------|---|---|
| Code no. | Common name | Scientific name |
| VP 0060 | Legume vegetables | (includes all commodities in this group) |
| VP 0522 | Broad bean (young pods and succulent seeds) | <i>Vicia faba</i> L. subsp. <i>eu-faba</i> , var. <i>major</i> Harz and var. <i>minor</i> Beck. |
| VP 0523 | Broad bean, shelled | <i>Vicia faba</i> L. subsp. <i>eu-faba</i> , var. <i>major</i> Harz and var. <i>minor</i> Beck. |
| VP 4443 | Pigeon bean (young pods and succulent seeds) | <i>Vicia faba</i> L., subsp. <i>eu-faba</i> , var. <i>minor</i> Beck. |
| VP 0524 | Chick-pea (young pods) | <i>Cicer arietinum</i> L. |
| VP 0530 | Goa bean (young pods) | <i>Psophocarpus tetragonolobus</i> (L.) DC. |
| VP 0531 | Hyacinth bean (young pods and/or succulent seeds) | <i>Lablab purpureus</i> (L.) Sweet; Syn: <i>Dolichos lablab</i> L.; <i>Lablab niger</i> Medik; <i>Lablab vulgaris</i> Savi |
| VP 0537 | Pigeon pea (young pods and/or succulent seeds) | <i>Cajanus cajan</i> (L.) Millsp.; Syn: <i>Cajanus indicus</i> Spreng. |
| VP 0541 | Soya bean (succulent seeds) | <i>Glycine max</i> (L.) Merr.; Syn: <i>Glycine soja</i> Sieb. & Zucc.; <i>Glycine hispida</i> (Moench) Maxim.; <i>Soja max</i> (L.) Piper |
| VP 0542 | Sword bean (young pods and succulent seeds) | <i>Canavalia gladiata</i> (Jacq.) DC. |
| VP 0543 | Winged pea (young pods) | <i>Tetragonolobus purpureus</i> Moench; Syn: <i>Lotus tetragonolobus</i> L. |

Draft Guidelines for Technical Meeting with Trade on 27 June 2013.
Subject to further revision.

| Commodity | | |
|---|--|---|
| Code no. | Common name | Scientific name |
| VP 0546 | Soya bean (young pods) | <i>Glycine max</i> (L.) Merr.; Syn: <i>Glycine soja</i> Sieb. & Zucc.; <i>Glycine hispida</i> (Moench) Maxim.; <i>Soja max</i> (L.) Piper |
| Subgroup A Beans, except broad bean and soya bean (young pods and succulent seeds) | | |
| VP 0061 | Beans, except broad bean and soya bean (young pods and succulent seeds) | <i>Phaseolus</i> spp. (includes all commodities in this subgroup) |
| VP 0526 | Common bean (young pods and/or succulent seeds) | <i>Phaseolus vulgaris</i> L., several cultivars |
| VP 4409 | Field bean (young pods) (see Common bean) | |
| VP 4415 | French bean (young pods and succulent seeds) (see Common bean) | |
| VP 4421 | Green bean (young pods and succulent seeds) (see Common bean) | |
| VP 4431 | Kidney bean (young pods and/or succulent seeds) (see Common bean) | |
| VP 0534 | Lima bean (young pods and/or succulent seeds) | <i>Phaseolus lunatus</i> L.; Syn: <i>Phaseolus limensis</i> Macf.; <i>Phaseolus inamoenus</i> L. |
| VP 4453 | Snap bean (young pods) (see Common bean) | |
| Subgroup B Beans, shelled (succulent seeds) | | |
| VP 0062 | Beans, shelled (succulent seeds) | <i>Phaseolus</i> spp. (includes all commodities in this subgroup) |
| Subgroup C Peas (young pods and succulent seeds) | | |
| VP 0063 | Peas (young pods and succulent seeds) | <i>Pisum</i> spp.; <i>Vigna</i> spp. (includes all commodities in this subgroup) |
| VP 4395 | Asparagus bean (pods) (see Yard-long bean) | |

**Draft Guidelines for Technical Meeting with Trade on 27 June 2013.
Subject to further revision.**

| Commodity | | |
|---|--|--|
| Code no. | Common name | Scientific name |
| VP 0527 | Cowpea (young pods) | <i>Vigna unguiculata</i> L. Walp., Cv-group <i>unguiculata</i> Syn: <i>Vigna unguiculata</i> (L.) Walp. subsp. <i>unguiculata</i> |
| VP 0528 | Garden pea (young pods) | <i>Pisum sativum</i> L., subsp. <i>hortense</i> (Neilr.) A. et G.; Syn: <i>Pisum sativum</i> L., subsp. <i>sativum</i> L. |
| VP 0536 | Mung bean (young pods) | <i>Vigna radiata</i> (L.) Wilczek, var. <i>radiata</i> ; <i>Vigna aureus</i> (Roxb.) Hepper; Syn: <i>Phaseolus aureus</i> Roxb. |
| VP 0538 | Podded pea (young pods) | <i>Pisum sativum</i> L., subsp. <i>sativum</i> var. <i>axiphium</i> ; <i>Pisum sativum</i> L., subsp. <i>sativum</i> , var. <i>sacharatum</i> |
| VP 4457 | Sugar pea (young pods) (see Podded pea) | <i>Pisum sativum</i> L., subsp. <i>sativum</i> , var. <i>sacharatum</i> |
| VP 0544 | Yard-long bean (young pods) | <i>Vigna unguiculata</i> (L.) Walp., Cv-group <i>sesquipedalis</i> Syn: <i>Vigna unguiculata</i> (L.) Walp. subsp. <i>sesquipedalis</i> (L.) Verdc. |
| Subgroup D Peas, shelled (succulent seeds) | | |
| VP 0064 | Peas, shelled (succulent seeds) | <i>Pisum</i> spp.; <i>Vigna</i> spp. (includes all commodities in this subgroup) |
| VP 0529 | Garden pea, shelled (succulent seeds) | <i>Pisum sativum</i> L., subsp. <i>hortense</i> (Neilr.) A. et G.; Syn: <i>Pisum sativum</i> L., subsp. <i>sativum</i> L. |

Group 15 – Pulses (group letter code VD)

a. Portion of the commodity to which the MRL applies (and which is analysed): **Whole commodity.**

b. Two subgroups have been identified:

- Subgroup A Beans (dry)
- Subgroup B Peas (dry)

c. Detailed classification:

| Commodity | | |
|-------------------------------|--|---|
| Code no. | Common name | Scientific name |
| VD 0070 | Pulses | (includes all commodities in this group) |
| VD 0523 | Broad bean (dry) | <i>Vicia faba</i> L., subsp. <i>eu-faba</i> , var. <i>major</i> Harz. and var. <i>minor</i> Beck. |
| VD 0524 | Chick-pea (dry) | <i>Cicer arietinum</i> L. |
| VD 0531 | Hyacinth bean (dry) | <i>LabLab purpureus</i> (L.) Sweet; Syn: <i>Lablab niger</i> Medik; <i>Dolichos lablab</i> L.; <i>Lablab vulgaris</i> Savi. |
| VD 0533 | Lentil (dry) | <i>Lens esculenta</i> Moench; Syn: <i>Lens culinaris</i> Medik; <i>Ervum lens</i> L. |
| VD 0545 | Lupin (dry) | <i>Lupinus</i> spp., sweet spp. var. and cultivars with a low alkaloid content |
| VD 0537 | Pigeon pea (dry) | <i>Cajanus cajan</i> (L.) Millsp.; Syn: <i>Cajanus indicus</i> Spreng. |
| VD 0541 | Soya bean (dry) | <i>Glycine max</i> (L.) Merr.; Syn: <i>Glycine soja</i> Sieb. & Zucc.; <i>Glycine hispida</i> (Moench) Maxim.; <i>Soja max</i> (L.) Piper |
| Subgroup A Beans (dry) | | |
| VD 0071 | Beans (dry) | <i>Phaseolus</i> spp.; several species and cultivars (includes all commodities in this subgroup) |
| VD 0534 | Lima bean (dry) | <i>Phaseolus lunatus</i> L.; Syn: <i>Phaseolus limensis</i> Macf.; <i>Phaseolus inamoenus</i> L. |
| VD 0526 | Common bean (dry) | <i>Phaseolus vulgaris</i> L. |
| VD 4477 | Field bean (dry) (see Common bean (dry)) | |
| VD 4503 | Kidney bean (dry) (see Common bean (dry)) | |
| Subgroup B Peas (dry) | | |

**Draft Guidelines for Technical Meeting with Trade on 27 June 2013.
Subject to further revision.**

| Commodity | | |
|------------------|--------------------|--|
| Code no. | Common name | Scientific name |
| VD 0072 | Peas (dry) | <i>Pisum</i> spp.; <i>Vigna</i> spp. (includes all commodities in this subgroup) |
| VD 0560 | Adzuki bean (dry) | <i>Vigna angularis</i> (Willd.) Ohwi & H. Ohashi; Syn: <i>Phaseolus angularis</i> (Willd.) Wight |
| VD 0527 | Cowpea (dry) | <i>Vigna unguiculata</i> (L.) Walp.; Syn: <i>Vigna sinensis</i> (L.) Savi ex Hassk.; <i>Dolichos sinensis</i> L. |
| VD 0561 | Field pea (dry) | <i>Pisum sativum</i> L., subsp. <i>arvense</i> (L.) A. et G.; Syn: <i>Pisum arvense</i> L. |
| VD 0536 | Mung bean (dry) | <i>Vigna radiata</i> (L.) Wilczek, var. <i>radiata</i> ; <i>Vigna aureus</i> (Roxb.) Hepper; Syn: <i>Phaseolus aureus</i> Roxb. |
| VD 0539 | Rice bean (dry) | <i>Vigna umbellata</i> (Thunb.) Ohwi & H. Ohashi; Syn: <i>Vigna calcarata</i> (Roxb.) Kurz; <i>Phaseolus calcaratus</i> Roxb. |

DRAFT

Group 16 – Root and tuber vegetables (group letter code VR)

a. Portion of the commodity to which the MRL applies (and which is analysed): **Whole commodity after removing tops. Remove adhering soil (e.g., by rinsing in running water or by gentle brushing of the dry commodity).**

b. No subgroup has been identified under this food group.

c. Detailed classification:

| Commodity | | |
|------------------|---------------------------------------|--|
| Code no. | Common name | Scientific name |
| VR 0075 | Root and tuber vegetables | (includes all commodities in this group) |
| VR 0572 | Arrowhead | <i>Sagittaria sagittifolia</i> L.; <i>Sagittaria latifolia</i> Willd.; <i>Sagittaria trifolia</i> L. |
| VR 0573 | Arrowroot | <i>Maranta arundinacea</i> L.; several cultivars |
| VR 0574 | Beetroot | <i>Beta vulgaris</i> L., var. <i>conditiva</i> |
| VR 0575 | Burdock, greater or edible | <i>Arctium lappa</i> L.; Syn: <i>Lappa officinalis</i> All.; <i>Lappa major</i> Gaertn. |
| VR 0576 | Canna, edible | <i>Canna indica</i> L. Syn: <i>Canna edulis</i> Ker. Gawl. |
| VR 0577 | Carrot | <i>Daucus carota</i> L., several subsp., var. and cultivars |
| VR 0463 | Cassava | <i>Manihot esculenta</i> Crantz.; Syn: <i>Manihot aipi</i> Pohl; <i>Manihot ultissima</i> Pohl; <i>Manihot dulcis</i> Pax.; <i>Manihot palmata</i> Muell.-Arg. |
| VR 0578 | Celeriac | <i>Apium graveolens</i> L., var. <i>rapaceum</i> (Mill.) Gaudin |
| VR 2941 | Kudzu | <i>Pueraria lobata</i> (Willd.) Ohwi |
| VR 0469 | Chicory, roots | <i>Cichorium intybus</i> L. var. <i>foliosum</i> hegi and var. <i>sativum</i> Lam. & DC. |
| VR 4535 | Chinese radish (see Radish, Japanese) | |
| - | Chinese water chestnut | <i>Eleocharis dulchis</i> (Burm. f.) Trin. ex Hensch. |
| VR 0581 | Galangal, Greater | <i>Languas galanga</i> (L.) Stuntz; Syn: <i>Alpinia galanga</i> Sw. |
| VR 0582 | Galangal, Lesser | <i>Languas officinarum</i> (Hance) Farwell |
| - | Ginseng (Codex Stan. 295R-2009) | <i>Panax</i> spp. |

Draft Guidelines for Technical Meeting with Trade on 27 June 2013.
Subject to further revision.

| Commodity | | |
|------------------|-------------------------|--|
| Code no. | Common name | Scientific name |
| VR 0583 | Horseradish | <i>Armoracia rusticana</i> (Gaertn.) M. et Sch.; Syn: <i>Cochlearia armoracia</i> L.; <i>Armoracia lapathifolia</i> Gilib. |
| VR 0584 | Japanese artichoke | <i>Stachys sieboldii</i> Miq. |
| - | Konjac | <i>Amorphophallus konjac</i> K. Koch |
| - | Lotus tuber | <i>Nelumbo nucifera</i> Gaertn. |
| VR 0588 | Parsnip | <i>Pastinaca sativa</i> L. |
| VR 0589 | Potato | <i>Solanum tuberosum</i> L., several subsp., varieties and cultivars |
| VR 0494 | Radish | <i>Raphanus sativus</i> L., subvar. <i>radicola</i> Pers. |
| VR 0591 | Radish, Japanese | <i>Raphanus sativus</i> L., var. <i>longipinnatus</i> Bailey |
| VR 4563 | Rutabaga (see Swede) | |
| VR 0596 | Sugar beet | <i>Beta vulgaris</i> L., var. <i>sacharifera</i> ; Syn: <i>Beta vulgaris</i> L. var. <i>altissima</i> |
| VR 0497 | Swede | <i>Brassica napus</i> L., var. <i>napobrassica</i> (L.) Reichenbach |
| VR 0508 | Sweet potato | <i>Ipomoea batatas</i> (L.) Lam. |
| VR 4569 | Tapioca (see Cassava) | |
| VR 0505 | Taro | <i>Colocasia esculenta</i> (L.) Schott, var. <i>esculenta</i> |
| VR 0506 | Turnip, Garden | <i>Brassica rapa</i> L., var. <i>rapa</i> ; Syn: <i>Brassica campestris</i> L., var. <i>rapifera</i> Metz. |
| VR 3953 | Wasabi root | <i>Wasabia japonica</i> (Miq.) Matsum.; Syn: <i>Wasabia japonica</i> (Miq.) Koidz |
| VR 0601 | Yam bean | <i>Pachyrhizus erosus</i> (L.) Urban; Syn: <i>Pachyrhizus angulatus</i> Rich. ex DC.; <i>Pachyrhizus bulbosus</i> (L.) Kurz; <i>Dolichos erosus</i> L. |
| VR 4579 | Yam, Greater (see Yams) | <i>Dioscorea alata</i> L. |
| VR 0600 | Yams | <i>Dioscorea</i> L.; several species |

Group 17 – Stalk and stem vegetables (group letter code VS)

- a. Portion of the commodity to which the MRL applies (and which is analysed): **Whole commodity as marketed after removal of obviously decomposed or withered leaves.**

Rhubarb, leaf stems only.

Globe artichoke, flowerhead only.

Celery and asparagus, remove adhering soil.

- b. No subgroup has been identified under this food group.

- c. Detailed classification:

| Commodity | | |
|-----------|------------------------------------|---|
| Code no. | Common name | Scientific name |
| VS 0078 | Stalk and stem vegetables | (includes all commodities in this group) |
| VS 0620 | Artichoke, globe | <i>Cynara scolymus</i> L. |
| VS 0621 | Asparagus | <i>Asparagus officinalis</i> L. |
| VS 0622 | Bamboo shoots | <i>Arundinaria</i> spp.; <i>Bambusa</i> spp. including <i>Bambusa blumeana</i> ; <i>Bambusa multiplex</i> ; <i>Bambusa oldhamii</i> ; <i>Bambusa textilis</i> ; <i>Chimonobambusa</i> spp.; <i>Dendrocalamus</i> spp., including <i>Dendrocalamus asper</i> ; <i>Dendrocalamus beecheyana</i> ; <i>Dendrocalamus brandisii</i> ; <i>Dendrocalamus giganteus</i> ; <i>Dendrocalamus laetiflorus</i> and <i>Dendrocalamus strictus</i> ; <i>Gigantochloa</i> spp. including <i>Gigantochloa albociliata</i> ; <i>Gigantochloa atter</i> ; <i>Gigantochloa levis</i> ; <i>Gigantochloa robusta</i> ; <i>Nastus elatus</i> ; <i>Phyllostachys</i> spp.; <i>Thyrsostachys siamensis</i> ; <i>Thyrsostachys oliverii</i> (Poaceae (alt. Gramineae)) |
| VS 0624 | Celery | <i>Apium graveolens</i> L., var. <i>dulce</i> |
| - | Celery leaves (see Group 23 Herbs) | |
| VS 0625 | Celtuce | <i>Lactuca sativa</i> L., var. <i>angustina</i> Irish; Syn: <i>Lactuca sativa</i> L., var. <i>asparagina</i> Bailey |

**Draft Guidelines for Technical Meeting with Trade on 27 June 2013.
Subject to further revision.**

| Commodity | | |
|------------------|---------------------------|---|
| Code no. | Common name | Scientific name |
| - | Flowering stalk of Garlic | <i>Allium sativum</i> L. |
| VS 0626 | Palm hearts | among others <i>Raphia</i> spp.; <i>Cocus nucifera</i> L.; <i>Borassus aethiopicum</i> Mart.; <i>Salacca zalacca</i> (Gaertn.) Voss |
| - | Prickly pear pads | <i>Opuntia ficus-indica</i> (L.) Mill. |
| VS 0627 | Rhubarb | <i>Rheum x hybridum</i> Murray Syn: <i>Rheum rhaponticum</i> L. |
| - | Water celery | <i>Oenanthe javanica</i> (Blume) DC. |
| - | Wild rice stem | <i>Zizania caduciflora</i> (Turcz.) Hand-Mazz. |
| VS 0469 | Witloof chicory (sprouts) | <i>Cichorium intybus</i> L., var. <i>foliosum</i> Hegi; green, red and white cultivars |

DRAFT

II. Special notes to reader on food type “02 VEGETABLES”

1. “Broccoli, Chinese”/“Kailan” belongs to the food group “Brassica (cole or cabbage) vegetables, Head cabbages, Flowerhead brassicas”.
2. Melon-type fruits such as melon, watermelon, cantaloupe, etc., belong to “Fruiting vegetables – Cucurbits”.
3. Goji berries and ground cherries belong to “Fruiting vegetables other than Cucurbits”.

DRAFT

03 GRASSES

I. Classification

Group 18 – Cereal grains (group letter code GC)

- a. Portion of the commodity to which the MRL applies (and which is analysed): **Whole commodity.**
- b. No subgroup has been identified under this food group.
- c. Detailed classification:

| Commodity | | |
|-----------|-------------------------------|--|
| Code no. | Common name | Scientific name |
| GC 0080 | Cereal grains | Seeds of gramineous plants as listed below, and Buckwheat and <i>Chenopodium</i> spp. as listed (includes all commodities in this group) |
| GC 0640 | Barley | <i>Hordeum vulgare</i> L.; Syn: <i>Hordeum sativum</i> Pers. |
| GC 0641 | Buckwheat | <i>Fagopyrum esculentum</i> Moench; Syn: <i>Fagopyrum sagittatum</i> Gilib. |
| GC 0644 | Job's tears | <i>Coix lacryma-jobi</i> L. |
| GC 0645 | Maize | <i>Zea mays</i> L., several cultivars, not including Popcorn and Sweet corn |
| GC 0646 | Millet | Including Barnyard millet, Bulrush millet, Common millet, Finger millet, Foxtail millet, Little millet; see for scientific names, specific commodities listed as Millet, followed by a specific denomination |
| GC 4645 | Millet, Barnyard (see Millet) | <i>Echinochloa crus-galli</i> (L.) Beauv.; Syn: <i>Panicum crus-galli</i> L.; <i>Echinochloa frumentacea</i> (Roxb.) Link; Syn: <i>Panicum frumentaceum</i> Roxb. |
| GC 4647 | Millet, Bulrush (see Millet) | <i>Pennisetum glaucum</i> (L.) R. Br.; Syn: <i>Pennisetum typhoides</i> (Burm. f.) Stapf. & C.E. Hubbard; <i>Pennisetum americanum</i> (L.) Leeke; <i>Pennisetum spicatum</i> (L.) Koern. |
| GC 4649 | Millet, Common (see Millet) | <i>Panicum miliaceum</i> L. |

**Draft Guidelines for Technical Meeting with Trade on 27 June 2013.
Subject to further revision.**

| Commodity | | |
|------------------|---------------------------------------|--|
| Code no. | Common name | Scientific name |
| GC 4651 | Millet, Finger (see Millet) | <i>Eleusine coracana</i> (L.) Gaertn. |
| GC 4653 | Millet, Foxtail (see Millet) | <i>Setaria italica</i> (L.) Beauv.; Syn: <i>Panicum italicum</i> L.; <i>Chaetochloa italica</i> (L.) Scribn. |
| GC 4655 | Millet, Little (see Millet) | <i>Panicum sumatrense</i> Roth ex Roem. & Schult. |
| GC 4661 | Pearl millet (see Millet, Bulrush) | |
| GC 0647 | Oats | <i>Avena sativa</i> L.; <i>Avena fatua</i> L.; <i>Avena abyssinica</i> Hochst.; <i>Avena nuda</i> L. |
| GC 0656 | Popcorn | <i>Zea mays</i> L., var. <i>everta</i> Sturt.; Syn: <i>Zea mays</i> L., var. <i>praecox</i> |
| GC 0648 | Quinoa | <i>Chenopodium quinoa</i> Willd. |
| GC 0649 | Rice | <i>Oryza sativa</i> L.; several ssp. and cultivars |
| GC 0650 | Rye | <i>Secale cereale</i> L. |
| GC 0651 | Sorghum | <i>Sorghum bicolor</i> (L.) Moench; several <i>Sorghum</i> ssp. and cultivars |
| GC 0657 | Teosinte | <i>Zea mays</i> ssp. <i>mexicana</i> (Schrader) Iltis; Syn: <i>Zea mexicana</i> (Schrader) Kunze; <i>Euchlaena mexicana</i> Schrader. |
| GC 0653 | Triticale | Hybrid of Wheat and Rye |
| GC 0654 | Wheat | Cultivars of <i>Triticum aestivum</i> L.; Syn: <i>Triticum sativum</i> Lam.; <i>Triticum vulgare</i> Vill.; <i>Triticum durum</i> Desf.; <i>Triticum spelta</i> L.; <i>Triticum dicoccum</i> Schubl. |
| GC 0655 | Wild rice | <i>Zizania aquatica</i> L. |

Group 19 – Grasses for sugar or syrup production (group letter code GS)

- a. Portion of the commodity to which the MRL applies (and which is analysed): **Whole commodity.**
- b. No subgroup has been identified under this food group.
- c. Detailed classification:

| Commodity | | |
|-----------|-------------------------|---|
| Code no. | Common name | Scientific name |
| GS 0658 | Sorgo or Sorghum, Sweet | Varieties and cultivars of Sorghum of which the stems contain considerable amounts of sweet juice. Among others cultivars of <i>Sorghum bicolor</i> (L.) Moench; <i>Sorghum dochna</i> (Forsk.) Showdon |
| GS 0659 | Sugar cane | <i>Saccharum officinarum</i> L. |

04 NUTS AND SEEDS

I. *Classification*

Group 20 – Tree nuts (group letter code TN)

a. Portion of the commodity to which the MRL applies (and which is analysed): **Whole commodity after removal of shell.**

Chestnuts: whole in skin.

b. No subgroup has been identified under this food group.

c. Detailed classification:

| Commodity | | |
|-----------|--------------------------|--|
| Code no. | Common name | Scientific name |
| TN 0085 | Tree nuts | (includes all commodities in this group) |
| TN 0660 | Almonds | <i>Prunus dulcis</i> (Mill.) D. A. Webb Syn: <i>Amygdalus communis</i> L., <i>Prunus amygdalus</i> Batsch. |
| TN 0662 | Brazil nut | <i>Bertholletia excelsa</i> Humb. & Bonpl. |
| TN 0663 | Butter nut | <i>Juglans cinerea</i> L. |
| TN 0295 | Cashew nut | <i>Anacardium occidentale</i> L. |
| TN 0664 | Chestnuts | <i>Castanea</i> spp. |
| TN 0665 | Coconut | <i>Cocos nucifera</i> L. |
| - | Ginkgo | <i>Ginkgo biloba</i> L. |
| TN 0666 | Hazelnuts | <i>Corylus avellana</i> L.; <i>Corylus maxima</i> Mill.; <i>Corylus americana</i> Marshall; <i>Corylus californica</i> (A. DC.) Rose |
| TN 4685 | Filberts (see Hazelnuts) | <i>Corylus maxima</i> Mill. |
| TN 0667 | Hickory nuts | <i>Carya ovata</i> (Mill.) K. Koch.; <i>Carya glabra</i> (Mill.) Sweet; other sweet <i>Carya</i> species |
| TN 0669 | Macadamia nuts | <i>Macadamia ternifolia</i> F. Muell.; <i>Macadamia tetraphylla</i> L.A.S. Johnson |
| TN 0672 | Pecan | <i>Carya illinoensis</i> (Wangh.) K. Koch |

Draft Guidelines for Technical Meeting with Trade on 27 June 2013.
Subject to further revision.

| Commodity | | |
|-----------|---------------|---|
| Code no. | Common name | Scientific name |
| TN 0673 | Pine nuts | Mainly <i>Pinus pinea</i> L.; also <i>Pinus cembra</i> L.; <i>Pinus edulis</i> Engelm.; <i>Pinus sibirica</i> Du Tour; <i>Pinus koraiensis</i> Siebold & Zucc.; <i>Pinus gerardiana</i> Wall. ex D. Don; <i>Pinus monophylla</i> Torr. & Frém. and other <i>Pinus</i> species, except <i>Pinus armandii</i> Franch. and <i>Pinus massoniana</i> Lamb. |
| TN 0675 | Pistachio nut | <i>Pistacia vera</i> L. |
| TN 0678 | Walnuts | <i>Juglans regia</i> L.; <i>Juglans nigra</i> L. |

DRAFT

Group 21 – Oilseed (group letter code SO)

a. Portion of the commodity to which the MRL applies (and which is analysed): **Unless specified, seed or kernels, after removal of shell or husk.**

Oilfruits: whole commodity.

b. No subgroup has been identified under this food group.

c. Detailed classification:

| Commodity | | |
|------------------|----------------------------|---|
| Code no. | Common name | Scientific name |
| SO 0088 | Oilseed | (includes all commodities in this group) |
| - | Canola (see Rape seed) | |
| SO 0691 | Cotton seed | <i>Gossypium</i> spp.; several species and cultivars |
| - | Flax-seed (see Linseed) | |
| - | Grape seed | <i>Vitis vinifera</i> L., several cultivars |
| SO 0692 | Kapok | <i>Ceiba pentandra</i> (L.) Gaertn. |
| SO 0693 | Linseed | <i>Linum usitatissimum</i> L. |
| - | Melon seed | <i>Cucumis melo</i> L. spp. several species and cultivars |
| SO 0485 | Mustard seed | <i>Brassica nigra</i> (L.) Koch; <i>Sinapis alba</i> L. Syn: <i>Brassica hirta</i> Moench |
| SO 0694 | Mustard seed, Field | <i>Brassica campestris</i> L., var. <i>sarson</i> Prain; <i>Brassica campestris</i> L., var. <i>toria</i> Duthie & Fuller |
| SO 0478 | Mustard seed, Indian | <i>Brassica juncea</i> (L.) Czern. & Coss. |
| - | Olives for oil production | <i>Olea europaea</i> L., var. <i>europaea</i> |
| - | Palm kernel (see Palm nut) | |
| SO 0696 | Palm nut | <i>Elaeis guineensis</i> Jacq. |
| SO 0697 | Peanut | <i>Arachis hypogaea</i> L. |
| SO 0703 | Peanut, whole | |
| SO 0698 | Poppy seed | <i>Papaver somniferum</i> L. |
| - | Pumpkin seed | <i>Cucurbita pepo</i> L. |
| SO 0495 | Rape seed | <i>Brassica napus</i> L. |
| SO 0699 | Safflower seed | <i>Carthamus tinctorius</i> L. |

Draft Guidelines for Technical Meeting with Trade on 27 June 2013.
Subject to further revision.

| Commodity | | |
|-----------|-----------------|---|
| Code no. | Common name | Scientific name |
| SO 0700 | Sesame seed | <i>Sesamum indicum</i> L.; Syn: <i>Sesamum orientale</i> L. |
| SO 0702 | Sunflower seed | <i>Helianthus annuus</i> L. |
| - | Tea oil plant | <i>Camellia oleifera</i> Abel. |
| - | Watermelon seed | <i>Citrullus lanatus</i> (Thunb.) Matsum. & Nakai Syn: <i>Citrullus vulgaris</i> Schrad.; <i>Colocynthis citrullus</i> (L.) O. Ktze. |

DRAFT

Group 22 – Seed for beverages and sweets (group letter code SB)

- a. Portion of the commodity to which the MRL applies (and which is analysed): **Unless specified, whole commodity (seed only, other parts of the fruit not included).**
- b. No subgroup has been identified under this food group.
- c. Detailed classification:

| Commodity | | |
|-----------|--------------------------------------|--|
| Code no. | Common name | Scientific name |
| SB 0091 | Seed for beverages and sweets | (includes all commodities in this group) |
| SB 0715 | Cacao beans | <i>Theobroma cacao</i> L.; several ssp. |
| SB 0716 | Coffee beans | Among others <i>Coffea arabica</i> L.; <i>Coffea canephora</i> Pierre ex Froehner; <i>Coffea liberica</i> Bull ex Hiern.; ssp. and cultivars |
| SB 0717 | Cola nuts | <i>Cola nitida</i> (Vent.) Schott & Endl. ; <i>Cola acuminata</i> (P. Beauv.) Schott & Endl.; <i>Cola anomala</i> K. Schum.; <i>Cola verticillata</i> (Thonn.) Stapf ex A. Chev. |
| SB 4727 | Kola, see Cola nuts | |

II. Special notes to reader on food type “04 NUTS AND SEEDS”

1. Coconut belongs to “Tree nuts” whereas “Coconut, Young” is grouped under “Assorted tropical and sub-tropical fruits – inedible peel”.

DRAFT

05 HERBS AND SPICES

I. Classification

Group 23 – Herbs (group letter code HH)

- a. Portion of the commodity to which the MRL applies (and which is analysed): **Whole commodity as prepared for wholesale or retail distribution.**
- b. No subgroup has been identified under this food group.
- c. Detailed classification:

| Commodity | | |
|-----------|--|---|
| Code no. | Common name | Scientific name |
| HH 0092 | Herbs | (includes all commodities in this group) |
| - | Anise | <i>Pimpinella anisum</i> L. |
| HH 0722 | Basil | <i>Ocimum basilicum</i> L.; <i>Ocimum x citrodorum</i> Vis.; <i>Ocimum minimum</i> L.; <i>Ocimum americanum</i> L.; <i>Ocimum gratissimum</i> L.; <i>Ocimum tenuiflorum</i> L. |
| HH 0724 | Borage | <i>Borago officinalis</i> L. |
| - | Borage, Indian | <i>Plectranthus amboinicus</i> (Lour.) Spreng. |
| HH 0624 | Celery leaves | <i>Apium graveolens</i> L., var. <i>seccalinum</i> Alef |
| HH 0727 | Chives (see Group 09 – Bulb vegetables) | <i>Allium schoenoprasum</i> L. |
| - | Cilantro (see Coriander leaves) | |
| - | Coriander leaves | <i>Coriandrum sativum</i> L. |
| - | Coriander, Vietnamese | <i>Persicaria odorata</i> (Lour.) Sojak. |
| HH 0729 | Curry leaves | <i>Murraya koenigii</i> (L.) Spreng. |
| HH 0730 | Dill | <i>Anethum graveolens</i> L. |
| HH 0731 | Fennel | <i>Foeniculum vulgare</i> Mill.; Syn: <i>Foeniculum officinale</i> All.; <i>Foeniculum capillaceum</i> Gilib. |

**Draft Guidelines for Technical Meeting with Trade on 27 June 2013.
Subject to further revision.**

| Commodity | | |
|------------------|---|--|
| Code no. | Common name | Scientific name |
| - | Fennel, Bulb (see Group 09 – Stalk and stem vegetables) | |
| - | Japanese pepper leaves | <i>Zanthoxylum piperitum</i> DC. |
| - | Kaffir lime leaves | <i>Citrus hystrix</i> DC. |
| - | Laurel leaves | <i>Laurus nobilis</i> L. |
| HH 0734 | Lavender | <i>Lavendula angustifolia</i> Mill.; Syn: <i>Lavendula officinalis</i> Chaix; <i>Lavendula spica</i> L.; <i>Lavendula vera</i> DC. |
| - | Lemongrass | <i>Cymbopogon citratus</i> (DC.) Stapf; <i>Cymbopogon flexuosus</i> (Nees ex Steud.) Will. Watson |
| HH 0736 | Marjoram | <i>Origanum majorana</i> L.; <i>Marjorana hortensis</i> Moench.; <i>Origanum vulgare</i> L.; <i>Origanum onites</i> L. |
| HH 0738 | Mints | Several <i>Mentha</i> species and hybrids; (see also individual Mints) including <i>Mentha spicata</i> L.; <i>Mentha x piperata</i> L.; <i>Mentha x gracilis</i> Sole; <i>Mentha aquatica</i> L.; <i>Mentha longifolia</i> (L.) Huds.; <i>Mentha arvensis</i> L.; <i>Mentha suaveolens</i> Ehrh. |
| - | Oregano (see Marjoram) | |
| - | Pandan leaves | <i>Pandanus amaryllifolius</i> Roxb. |
| HH 0740 | Parsley | <i>Petroselinum crispum</i> (Mill.) Nyman ex A. W. Hill; Syn: <i>Petroselinum sativum</i> Hoffm.; <i>Petroselinum hortense</i> auct.; <i>Petroselinum crispum</i> var. <i>neapolitanum</i> Danert |
| - | Peppermint (see Mints) | <i>Mentha x piperita</i> L. (= hybrid of <i>Mentha aquatica</i> L. x <i>Mentha spicata</i> L.) |
| - | Beefsteak plant (Perilla) | <i>Perilla frutescens</i> (L.) Britton var. <i>crispa</i> |
| HH 0741 | Rosemary | <i>Rosmarinus officinalis</i> L. |
| HH 0742 | Rue | <i>Ruta graveolens</i> L. |
| HH 0743 | Sage and related <i>Salvia</i> species | <i>Salvia officinalis</i> L.; <i>Salvia sclarea</i> L.; <i>Salvia triloba</i> L. |
| HH 0745 | Savory, Summer; Winter | <i>Satureja hortensis</i> L.; <i>Satureja montana</i> L. |
| HH 4765 | Spearmint (see Mints) | <i>Mentha spicata</i> L.; Syn: <i>Mentha viridis</i> L. |
| - | Stevia | <i>Stevia rebaudiana</i> (Bertoni) Bertoni |
| HH 0749 | Tarragon | <i>Artemisia dracunculus</i> L. |

Draft Guidelines for Technical Meeting with Trade on 27 June 2013.
Subject to further revision.

| Commodity | | |
|-----------|--------------------|---|
| Code no. | Common name | Scientific name |
| HH 0750 | Thyme | Including <i>Thymus vulgaris</i> L.; <i>Thymus serpyllum</i> L.; <i>Thymus citriodorus</i> (Pers.) Schreb. and <i>Thymus</i> hybrids. |
| HH 0752 | Wintergreen leaves | <i>Gaultheria procumbens</i> L. (not including herbs of the Wintergreen family (<i>Pyrolaceae</i>)) |
| - | Wasabi leaves | <i>Wasabia japonica</i> (Miq.) Matsum. |

DRAFT

Group 24 – Spices (group letter code HS)

a. Portion of the commodity to which MRL applies (and which is analysed):
Unless specified, whole commodity as marketed, mainly in the dried form.

b. Three subgroups have been identified:

- Subgroup A Seeds
- Subgroup B Fruit or berry
- Subgroup C Root or rhizome

c. Detailed classification:

| Commodity | | |
|-----------|--|--|
| Code no. | Common name | Scientific name |
| HS 0093 | Spices | (includes all commodities in this group) |
| HS 0777 | Cinnamon bark (including Cinnamon, Chinese bark) | <i>Cinnamomum verum</i> J. Presl; Syn: <i>Cinnamomum zeylanicum</i> Blume; <i>Cinnamomum aromaticum</i> Nees; Syn: <i>Cinnamomum cassia</i> (Nees) Nees ex Blume; <i>Cinnamomum burmannii</i> (C. G. & T. Nees) Nees ex Blume; <i>Cinnamomum loureiroi</i> Nees |
| HS 0778 | Cloves, buds | <i>Syzygium aromaticum</i> (L.) Merr. & Perr.; Syn: <i>Eugenia caryophyllus</i> (Sprengel) Bullock & Harrison; <i>Eugenia aromatica</i> Kuntze; <i>Eugenia caryophyllata</i> Thunb.; <i>Caryophyllus aromaticus</i> L. |
| - | Kaffir lime peel | <i>Citrus hystrix</i> DC. |
| HS 0788 | Mace | Dried aril of <i>Myristica fragrans</i> Houtt. |
| - | Mastic | <i>Pistacia lentiscus</i> L. |
| HS 0444 | Peppers Chili, dried (Fell outside of the definition of spices for the proposes of setting MRLs (ALINORM 04/27/24) ²) | |

² According to the Report of the 36th Session of the Codex Committee on Pesticide Residues, “Noting that MRLs existed for fresh chilli and other peppers for a number of pesticides and that good agricultural practice (GAP) and trial data were required to establish these MRLs, the Committee agreed that chili pepper fell outside of the definition of spices for the proposes of setting MRLs”. In other words, the group MRL for “spices (HS 0093)” would not be applicable to “Peppers Chilli, dried (HS 0444)” whereas the group/subgroup MRL for “Fruiting Vegetables, other than Cucurbits (VO 0050)” and “Peppers (VO 0051)” would be applicable when

Draft Guidelines for Technical Meeting with Trade on 27 June 2013.
Subject to further revision.

| Commodity | | |
|----------------------------------|-----------------------------------|---|
| Code no. | Common name | Scientific name |
| - | Saffron | <i>Crocus sativus</i> L. |
| HS 3350 | Satsuma mandarin peel | <i>Citrus unshiu</i> Marcow. |
| - | Yuja peel | <i>Citrus junos</i> Siebold ex Tanaka |
| | Yuzu peel (see Yuja peel) | |
| Subgroup A Seeds | | |
| HS 0190 | Spices, seeds | (includes all commodities in this subgroup) |
| HS 0720 | Angelica seed | <i>Angelica archangelica</i> L.; <i>Angelica sylvestris</i> L. |
| HS 0771 | Anise seed | <i>Pimpinella anisum</i> L. |
| - | Basil seed | <i>Ocimum</i> spp. |
| HS 0774 | Caraway seed | <i>Carum carvi</i> L. |
| HS 0775 | Cardamom (pods and seeds) | <i>Elettaria cardamomum</i> (L.) Maton; <i>Amomum tsao-ko</i> Crevost & Lemarié; <i>Amomum subulatum</i> Roxb.; <i>Amomum compactum</i> Sol. ex Maton |
| HS 0624 | Celery seed | <i>Apium graveolens</i> L. |
| HS 0779 | Coriander, seed | <i>Coriandrum sativum</i> L. |
| HS 0780 | Cumin seed | <i>Cuminum cyminum</i> L. |
| HS 0730 | Dill seed | <i>Anethum graveolens</i> L. |
| HS 0731 | Fennel, seed | <i>Foeniculum vulgare</i> Mill.; Syn: <i>Foeniculum officinale</i> All; <i>Foeniculum capilaceum</i> Gilib. |
| HS 0789 | Nutmeg | Seed of <i>Myristica fragrans</i> Houltt. |
| - | Parsley seed | <i>Petroselinum crispum</i> (Mill.) Nyman ex A. W. Hill |
| Subgroup B Fruit or berry | | |
| HS 0191 | Spices, fruit or berries | (includes all commodities in this subgroup) |
| - | Luo han guo | <i>Siraitia grosvenorii</i> (Swingle) C. Jeffrey ex. A.M. Lu & Zhi Y. Zhang |
| HS 0790 | Pepper, Black; White; Pink; Green | <i>Piper nigrum</i> L. ³ |
| - | Pepper, Sichuan | <i>Zanthoxylum bungeanum</i> Maxim.; <i>Zanthoxylum schinifolium</i> Siebold & Zucc.; <i>Zanthoxylum simulans</i> Hance; <i>Zanthoxylum piperitum</i> (L.) DC |
| HS 0792 | Pimento, fruit | <i>Pimenta dioica</i> (L.) Merrill; Syn: <i>Pimenta officinalis</i> Lindl. |

appropriate, taking into account the principles for determining MRL/EMRL for a food in a dried, dehydrated or concentrated form as stipulated in Section 5(2) of the Pesticide Residues in Food Regulation (Cap. 132CM).

³ Although white pepper is in principle a processed food belonging to “Derived products of plant origin”, it is listed for convenience in Group 24 Spices. White pepper is prepared from Black pepper, *Piper nigrum* L. The seeds are retted in water and dried after removal of the mesocarp. The resulting white pepper may or may not be ground into powder.

**Draft Guidelines for Technical Meeting with Trade on 27 June 2013.
Subject to further revision.**

| Commodity | | |
|------------------------------------|--------------------------------|---|
| Code no. | Common name | Scientific name |
| - | Star anise | <i>Illicium verum</i> Hook. f. |
| HS 0795 | Vanilla, beans | <i>Vanilla mexicana</i> Mill.; Syn: <i>Vanilla fragrans</i> (Salisb.) Ames; <i>Vanilla planifolia</i> Andrews |
| Subgroup C Root and rhizome | | |
| HS 0193 | Spices, root or rhizome | (includes all commodities in this subgroup) |
| - | Coriander, root | <i>Coriandrum sativum</i> L. |
| - | Fingerroot | <i>Boesenbergia rotunda</i> (L.) Mansf. Syn: <i>Boesenbergia pandurata</i> (Roxb.) Schltr. |
| HS 0783 | Galangal, rhizomes | <i>Languas galanga</i> (L.) Stunz; Syn: <i>Alpinia galanga</i> Sw.; <i>Languas officinarum</i> (Hance) Farwell; Syn: <i>Alpinia officinarum</i> Hance; <i>Kaempferia galanga</i> L. |
| HS 0784 | Ginger, rhizomes | <i>Zingier officinale</i> Roscoe |
| HS 0787 | Liquorice, roots | <i>Glycyrrhiza glabra</i> L. |
| HS 0794 | Turmeric, root | <i>Curcuma domestica</i> Val.; Syn: <i>Curcuma longa</i> Keunig non L. |

DRAFT